



# Welcome To the Swan City!



## Know Before We Go:

During the tour today, you will see 70+ species of palms and many cycads, companion plants, and tropical hardwood trees. Due to the advent of Lethal Bronzing, planting cold-hardy palms in the Phoenix, Washingtonia, and Syagrus genera is no longer a fool-proof landscaping strategy. As a result, the plantings in both municipal and personal gardens have had to adapt.

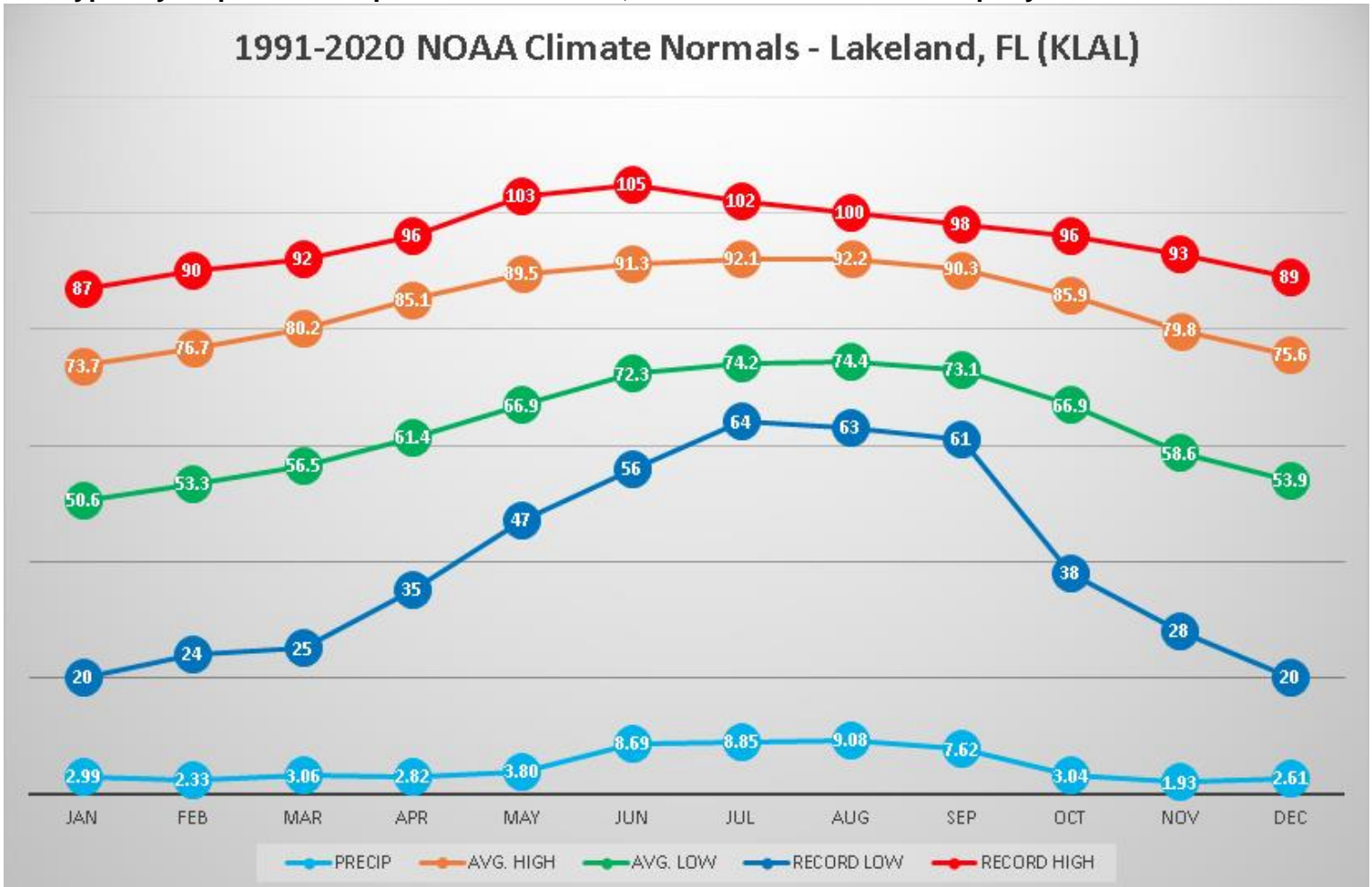
Most of our tours show these plants in a home landscape or botanical garden. Today, you will see them used primarily as part of an urban beautification project.

## Fun Facts:

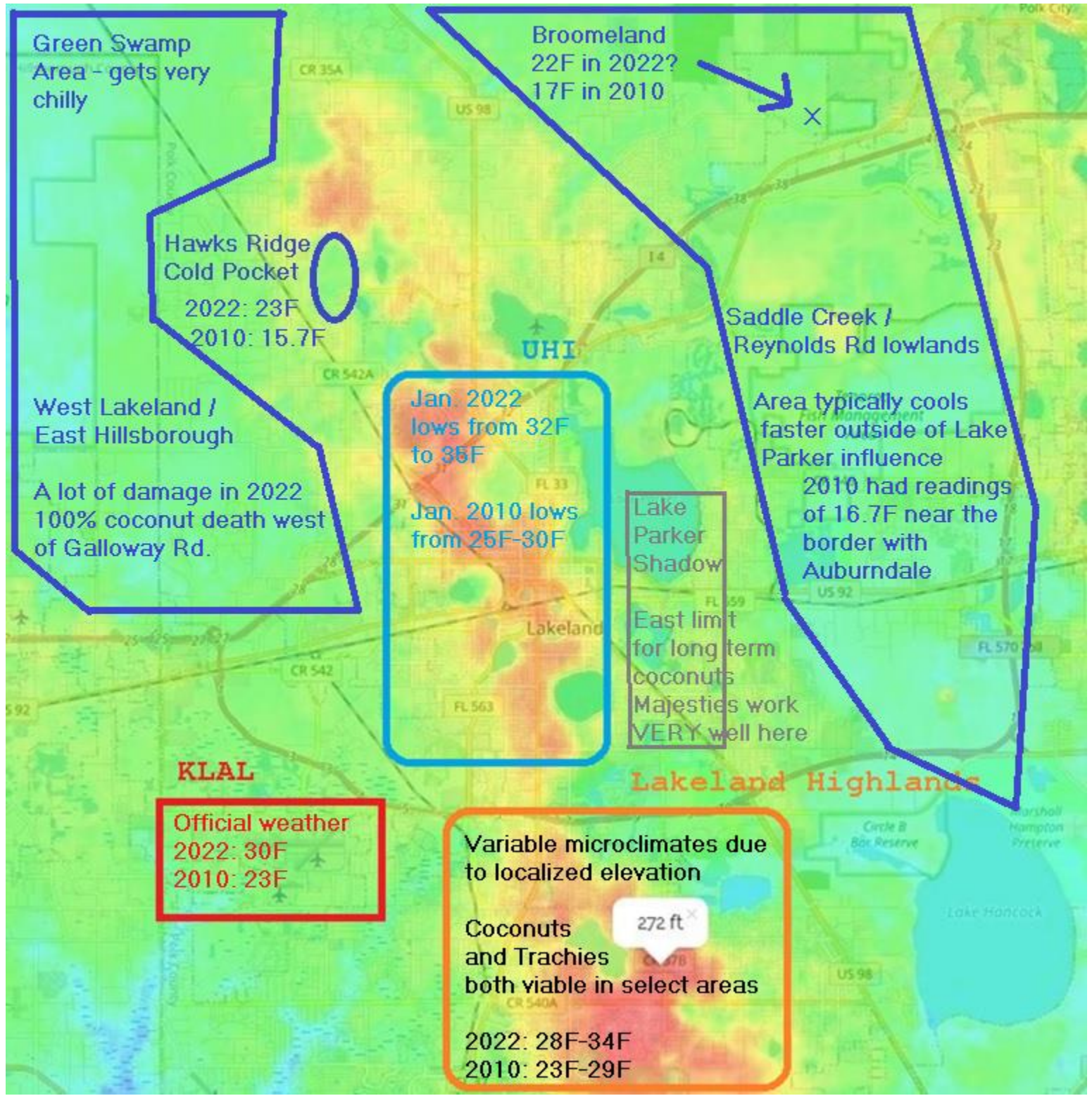
- The National Weather Service operated a Weather Bureau Office at City Hall from 1940-1978.
- Lakeland is the only city on the I-4 corridor having never officially recorded temperatures below 20F.
- Jan. 1985 tied the Dec.1962 record low of 20F at both the airport and Lakeland City Hall.
- Our record high was also set in 1985. 105F was officially recorded in the month of June.
- The average annual low at KLAL over 75 years of records is 29F.
- Due to UHI Effect, the average deviation from the airport is usually +3 to +5F, depending on site.
- The lowest temperatures in January 2022 at:
  - Hollis Gardens - 32F
  - KLAL - 30F
  - Hawks Ridge - 23F

## A Normal Year:

- A typical year provides ample warmth and rain, with over 55 inches of rain per year.

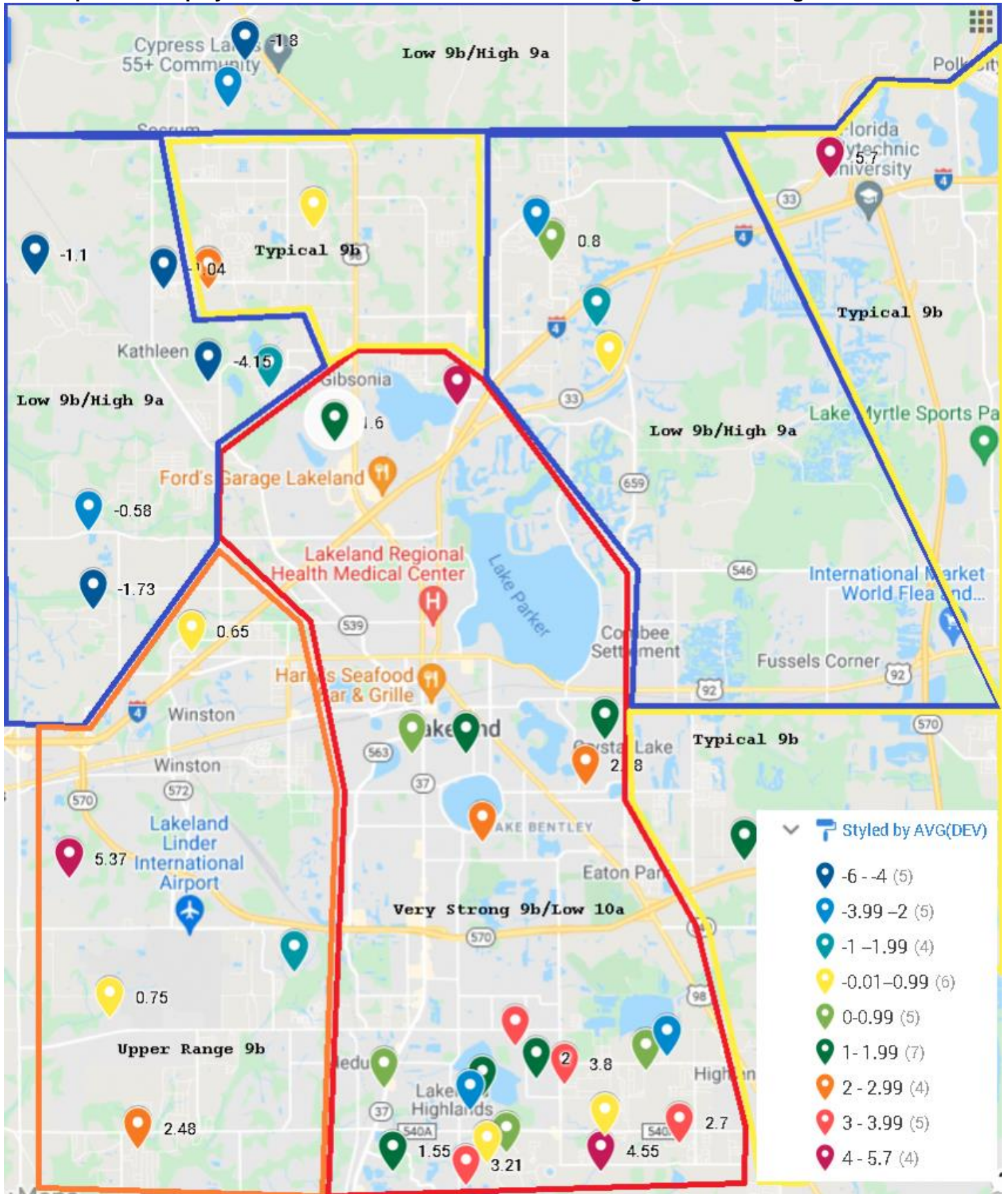


# Lakeland Topography:



## Urban Heat Island Effect on Display:

- The map below displays the milder and cooler areas in town using Weather Underground data:



## **Additional Resources:**

**Hollis Gardens:**

<https://www.palmtalk.org/forum/index.php?/topic/18482-hollis-gardens-in-lakeland-florida/>

**Lake Wire:**

<https://www.palmtalk.org/forum/index.php?/topic/61996-lake-wire-lakeland-fl/>

**Common Ground:**

<https://www.palmtalk.org/forum/index.php?/topic/61890-common-ground-lakeland-fl/>

**Lake Morton Flowering Tree Collection (interactive map) :**

<https://lakelandflorida.maps.arcgis.com/apps/MapTour/index.html?appid=064581415a6b41df972a9dcbd9ca9377>

**Hollis Garden Fruit Tree Collection (interactive map):**

<https://lakelandflorida.maps.arcgis.com/apps/MapTour/index.html?appid=ceb70c93127c47239300fa348fc2536b>

**Remarkable Palms of Tampa Bay (Many of the municipal palms are featured here):**

<https://www.palmtalk.org/forum/index.php?/topic/61172-remarkable-palms-of-tampa-bay/>

**Coconuts in Lakeland, FL:**

<https://www.palmtalk.org/forum/index.php?/topic/55422-coconuts-in-lakeland-fl/>

**Trachycarpus in Lakeland, FL:**

<https://www.palmtalk.org/forum/index.php?/topic/56607-trachycarpus-in-lakeland/>

**Zone Maps (Personal Project with NOAA Data):**

<https://www.google.com/maps/d/viewer?mid=1QCS-fTHGPMghnQJ7Q1phu7gSXSD6Rtxq&ll=28.878596832759804%2C-82.94798540924495&z=7>

**Freeze and Weather Station Data:**

<https://www.palmtalk.org/forum/index.php?/topic/66320-florida-freeze-and-weather-station-data/>

**Cold Hardiness Observation Master Data:**

<https://www.palmtalk.org/forum/index.php?/topic/61358-0000-cold-hardiness-observation-master-data/>

**January 2022 Cold Report:**

<https://www.palmtalk.org/forum/index.php?/topic/72092-january-2022-florida-freeze-report/>

**Urban Heat Islands:**

<https://www.palmtalk.org/forum/index.php?/topic/69728-urban-heat-island-research-and-scholarly-articles/>

**Palms and Others of Interest (Personal Garden Blog):**

<https://www.palmtalk.org/forum/index.php?/topic/52296-palms-and-others-of-interest/>

**New Arrivals (Personal Seed Starting Blog):**

<https://www.palmtalk.org/forum/index.php?/topic/53287-new-arrivals/>