

CENTRAL FLORIDA PALM-BULLETIN



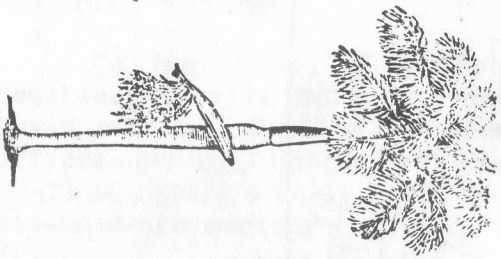
VOL.16 NO.3

OCT.1996

The Palm Society

CENTRAL FLORIDA CHAPTER

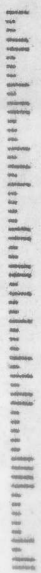
Ed & Nancy Hall
1111 Glen Garry Cir.
Maitland, FL 32751
407-647-2039



FIRST CLASS

Mr. & Mrs. David Bessie
1810 Huron Tr.
Maitland, FL 32751

32751-3826 03



The Central Florida Palm Bulletin is published three times annually and is free to members of the International Palm Society living within the free service area of the CFPS. We exist and operate solely on the goodwill of this membership. Your support is needed and encouraged.

SUBSCRIPTIONS, ADDRESS CHANGES & DONATIONS: Anyone residing outside the free service area must subscribe. The cost is \$7.00 annually. All subscriptions run from January through December. Make check payable to the Central Florida Palm Society and send to Nancy Hall at 1111 Glen Garry Circle, Maitland, FL 32751. Telephone number 407-647-2039.

NEWSLETTER CONTRIBUTIONS: Send to Elizabeth Stryjewski, 5155 Wildwood Ave. Merritt Island, FL 32953. Phone 407-453-1303.

FREE SERVICE AREA:

Alachua, Brevard, Citrus, Desoto, Flagler, Hardee, Hernando, Highlands, Hillsborough, Indian River, Lake, Manatee, Marion, Okeechobee, Orange, Osceola, Pasco, Pinellas, Polk, Sarasota, St. Lucie, Seminole, Sumter, Volusia.

Officers effective January 1996

President	Mike Dahme
1st V.P.	Tom Broome
2nd V.P.	Bob Bobick
Secretary	Nancy Hall
Treasurer	Edward Hall

The front cover picture shows the Borassus laden with fruit in Joe Michael's yard. Due to the generosity of Mr. Michael and the effort of Neil Yorio & Mike Dahme the bank account is much better.

NOVEMBER 1996 MEETING

Bob & Marita Bobick

In the last issue of the CFPS bulletin, it was mentioned that we were organizing a fall meeting and asked everyone for input and ideas. The feedback we received basically fell into 2 categories:

Theme #1-Many people commented about how much they enjoyed the meeting at Hersh & Jackie Womble's. It was a solo occasion (not running from place to place) which gave everyone time to socialize, enjoy each others company, and time to talk palms & cycads.

Theme #2-Many also expressed a desire to formalize and organize our society and achieve a focussed direction.

Therefore, in order to fulfill the wishes of those who suggested ideas, we propose the FIRST ANNUAL SOCIAL-FORMAL MEETING of the CFPS to be held November 9, 1996 at the home of Bob & Marita Bobick.

The social meeting will begin at 12:00 noon. This will allow us 2-3 hours of walking the garden, socializing with fellow CFPS members and others, and time to talk palms.

At approximately 3:00pm, we propose having a plant auction versus a plant sale. In this way, we raise money for the society (all plants are donated); everyone gets a chance at that "special find" (how many times have you wanted to buy something but it was already grabbed by someone else?); and finally we'll have fun bidding!! So bring a plant or two (and not just palms or cycads) that you feel is really special and let's see how much we raise at our first auction!!

After the auction, there will be a "covered dish" dinner to which everyone has contributed.(more on this later)

After dinner, we will begin our formal meeting and at this time we hope to address the topics and issues you have let us know you want to talk about. We will also be introducing our new editor, Liz Stryjewski, from Merritt Island. She will be showing some of her ideas for our bulletin and the possibilities of what can be done in the future. This is your chance to voice what you would like to see in our CFPS publication.

Paul Craft and Peter Mayotte have been gracious

enough to offer to speak about their recent trips to Cuba and the beautiful palms they have seen there. For those of you who would like to stay a bit longer, we plan to have a bonfire and time for further socializing.

If you plan to attend, please contact Bob or Marita at 407-568-6450. Price of admission is:

(#1) A "covered dish", meaning food or drink to fall in several categories ie, sodas, beer, wine, salads, entree's desserts, etc. Plan on your "covered dish" to feed at least 10 people. (we really need to hear from you so that we don't end up with 50 potato salads!!) Forks, knives, plates, etc. will be provided as well as a tent, tables and chairs.

(#2) At the same time, please let us know what topics you wish to hear discussed in our formal meeting in order that we may formulate some kind of agenda.

So...give us a call, let us know what you are bringing and help us formulate an agenda for our meeting.

WE NEED TO HEAR FROM YOU AFTER Oct 6, 1996 and BEFORE November 3, 1996 in order for us to be sure of adequate food and seating.

We look forward to hearing from you and hope to see you on November 9, 1996.

OVERNIGHT ACCOMMODATION FOR NOW 9

The Holiday Inn Express just west of RT 417 is providing a group rate for CFPS members wanting overnight accommodations. Call 407-282-3900 for reservation. The rate is \$55 plus tax and includes a free breakfast bar. Be sure to mention you are a CFPS member.

A CHANGE OF EDITORS

Your Co-Editors would like to take this opportunity to introduce our new Editor. Beginning 1997, Liz Stryjewski assumes this position. She will need your support. The Bulletin is only as good as the contributions of articles and pictures by our membership. As your retiring Editors we would like to thank everyone who has in the past contributed to the Bulletin. The only regret is we couldn't print all the material.

USF FALL SALE

Tom Broome

First of all I would like to thank everyone who helped at the spring sale. Ted Langley, Ed Hall and Roger Bilbrey (who isn't even in the Palm Society). I would like to especially thank Hersh Womble who helped us in a pinch.

The USF Fall Sale this year is on Saturday, October 12th 1996. Hours are from 10:00AM to 3:00PM. Members of the garden can enter at 9:30AM. The fall sale is relatively new compared to the spring sale, but has caught on quite well. Last year there were hundreds of people buying plants throughout the garden even at closing time.

The two USF sales have been the major, single source of income for our chapter. In the last couple of years we have had a great turnout by palm society members who have chosen this time to make their palm and cycad purchases. This has made an incredible difference in sales. It also gives people a good opportunity to see friends and talk about plants. As a vendor sometimes it's hard to choose what to bring. If you know you are coming and you know someone has a particular plant you want, call them and make a request. The vendors I know of for sure are Frank Tintera, the Pralls, Aloha Palms, Paul Craft and of course Cindy and I will be there. We are all in the Palm Society Roster if you need to contact us. If anyone has questions, call me at 941-984-2739, and see you at the sale.

SEED DISTRIBUTION

Again this year as in 1994, Mr. Michael's Borassus had a bumper crop of fruit and he was willing to share the seed with the CFPS. Thanks to the efforts of Neil Yorio and Mike Dahme, seed from the Borassus along with several other palms was collected and distributed world wide. This great effort did a lot to rebuild the bank account and allow the CFPS to continue to publish a respectable Bulletin. The majority of the Borassus and Bismarkii seed was sold to palm lovers in Hawaii, California, Florida, Venezuela, Canary Islands. Some seed was donated to two USDA sites in Puerto Rico. The specific recipients were Mr. Francis Bermidez USDA San Juan, PR and Mr. Miguel Roman, USDA Maya-Guez, PR.

1996 IPS BIENNIAL AND DIRECTORS MEETING

The Biennial started with the Directors meeting which covered some of the following subjects.

Membership is in excess of 3000 but due to several factors the society was having a cash flow problem. Several actions were taken to ensure no future problem including multiple year subscriptions and a lower limit on color pictures in Principes. The Vol. 1 to 40 inc Index to Principes should to press about 1 Oct. A soft cover reprint of Genera Palmarum is now available for \$50.00. Sales of the Madagascar palm book are good but about 2800 copies of the Chamaedorea book remain in stock. Actions area being taken to reduce this greatly.

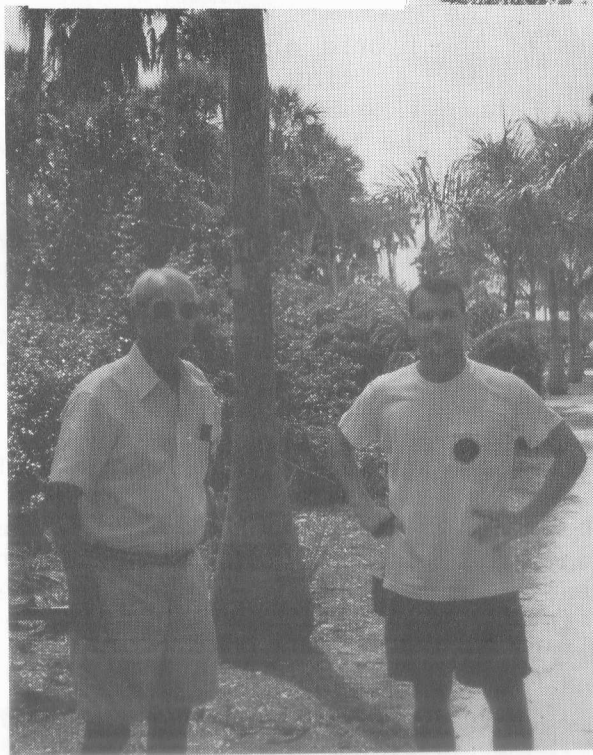
Secretarial duties were split into two offices- Administrative Secretary and Corresponding Secretary. New officers elected were Phil Bergman President, Cheryl Basic and Horace Hobbs VP's, Lynn McKamey AS, Jim Cain CS and Ross Wagner Treasurer. The Seed Bank was dissolved. The Internet contract was renewed for 1 year. Provisions were made to allow advertisements in the IPS webb page. The next Directors meeting should occur May 1997 at Kew Gardens England. The 11998 Biennial will be held in Thailand.

Following the day long Board of Directors meeting the enjoyable segment of the Biennial started. Your Secretary & Treasurer along with Byron & Libby Besse, John & Faith Bishock, and David & Geri Prall from the CFPS joined about 100 palm lovers from around the world to enjoy a well organized group of garden tours, seminars and social events. Southern California is one of the premier palm growing areas in the United states and the local residents showed us their very best. You don't want to miss the 1998 Biennial in Thailand so start planning now.

RESPONSE REQUIRED

Enclosed in each issue mailed to CFPS members (out of state subscribers can ignore) is a postcard that must be completed. We need to update our roster due to the significant number of changes in zip codes and area codes.

Photo of a 15 foot tall *Actinorhysis calapparia* at Bud Wideman's. A bit unsightly from effects of Winter/wind, but the fact this denizen of the tropics survived, handily, this and the past 10 or more (Bud's a little hazy on dates) years is proof that no species should be written-off until tested.



Joe Michael & Neil Yorio getting ready to obtain *Borassus* seed.

CROSS POLLINATION OF TWO DIFFERENT SPECIES OF LATANIA

Shri Dhar

Dr. John Dransfield of Royal Botanic Gardens at KEW identified my Blue Latan as female and suggested that I pollinate it. The male pollen used was either *L. lonteroides* or *L. commersonii* and produced a bumper seed crop from which I was able to germinate more than 200 plants.

During this period, I got some *Latania lonteroides* seeds (origin Hawaii) from Ms. Inge Hoffmann (U.S.A.). Fig. 1 shows its leaves. Compare this to the leaf of hybrid shown in Fig 2. They are distinctively different even at the juvenile stage.

When Ms. Inge Hoffmann was in Calcutta, I showed her the two plants which were about 2 1/2 feet of exposed growth. She observed a number of striking differences between the two.

The leaves of the hybrid are stiff with a deep burgundy margin with a tiny thorn like black corrulation. This thorn like corrulation points upward making it unpleasant to the touch when stroked towards the center of the leaf (Fig. 3). The reverse of these leaves also have deep burgundy red margins and midrib with a light white wooly coating, whereas in the *Latania lonteroides* the margins and the midribs are lighter burgundy red without any wooly coating, and show no thorn like corrulation on the margins (Fig. 4). Another striking difference is the specie has relaxed droopy leaves. Each leaf segment arches downward giving the plant an elegant, exotic and tropical appearance. The hybrid has more robust appearance with deeper coloration and stiff leaf segments.

Though the trunk is barely formed, the leaf bases on both the plants show typical criss cross pattern as observed on *Sabal*. The petioles of the *L. lonteroides* do not hug the trunk and are in a soft curve narrowing into a long light burgundy colored petioles which are loosely attached. The arch from the attachment to the actual petiole is hardly visible. They are a uniform dark, burgundy red even on the new growth with little green showing and are folded with a groove right upto the beginning of each leaf. The light grass-green leaf is glossy and smooth to the touch. The hybrid leaf bases have pronounced arch from the attachment to the actual petiole and hug the trunk more closely. The

overall appearance is robust.

This article has drawn heavily on the observations made by Ms. Inge Hoffmann.

Photos Labeled 1,2,3&4 on pages 9&10 are the four figures called out in the article on "Cross Pollination of Different species of *Latania*" by Shri Dhar.

TEE SHIRTS

Be the first in your area to own the new palm & cycad tee shirt. Created through the efforts of Geri Prall this new shirt has the following palms & cycads in color on a light gray tee shirt.

FRONT

Copernicia hospita
Encepharartos ferox
Licuala grandis
Pseudophoenix
Macrozamia moorei
Coccothrinax crinita

BACK

Encepharartos longifolius
Copernicia baileyana
Microcycas calocoma
Zombia antillarum
Satakentia liukuensis
Ravenea hildebrandtii
Zamia lindenii

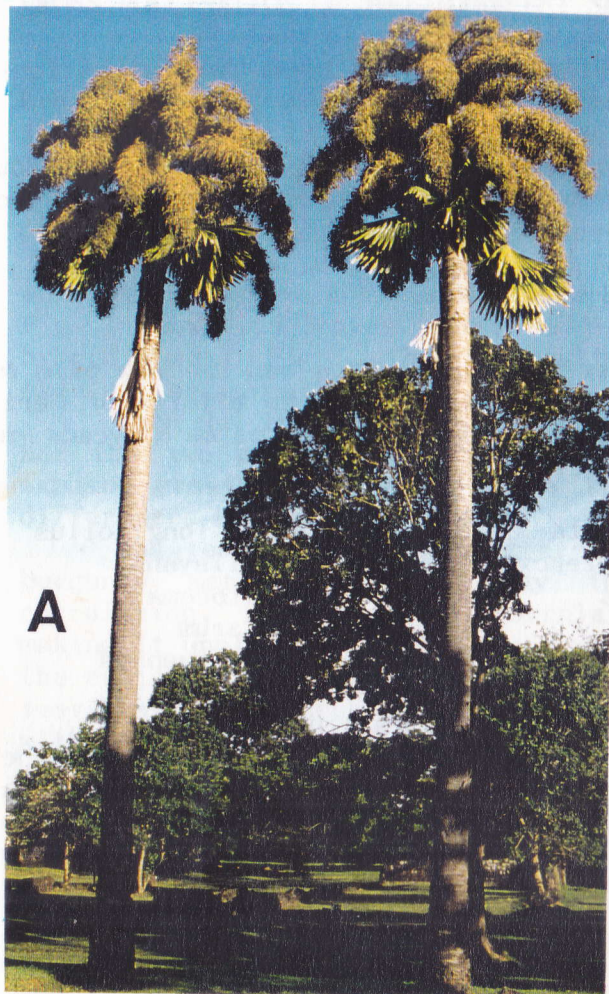
They will be available at the USF sale and the fall CFPS meeting. The colors are more vivid with greater detail in the plants. The price is \$18.00 each plus postage for mail order. Medium, large and x-large are all available from your treasurer.

Figs A,B,C on pages 9&10 were photos by Dr. Peter Mayotte

Fig. A "*Corypha umbraaulifera*" flowering in ruins of Panama Vieja, Panama.

Fig. B "*Copernicia cowellii*", the dwarf petticoat palm in Cuba.

Fig. C "*Coccothrinax pseudorigida*" near Camaguey Cuba



1

2

9

3

4

10

READ THE SIGNS AND VOLUNTEER

Bruce Turley

As announced in the spring, the Gizella Kopsick Palm Arboretum will be graced with informational signage for the palms and cycads. Jerry Shrewsbury has been very dedicated at format preparation on his computer. Bar a slight technical problem that has delayed the process, the signage should be installed this fall. Be sure to watch for it. This is our biggest effort for this calendar year and I assure you, we will be mighty proud!

Palm and cycad acquisition this season has been put on slow track while waiting to catch up with some transplants, freeze recovery, and of course the signage. However, memorial tree donations have been generous this season, with the addition of a double *Roystonea* and Dave Duran scouting out two shiny new *Phoenix theophrasti* and one *Sable uresana*.

As I'm sure we can all attest, freeze recovery has been slow but assured this summer. Besides the cold damaged species, the rest of the group has prospered nicely. My personal admiration for luxuriant growth has been directed to the *Copernicia alba*, *Rhapidophyllum hystrix*, all the Sables and even the *Nannorrhops*! The award for the best recovery from cold damage goes to the *Hyophorbe verschaffeltii*, *Hyophorbe lagenicaulis*, and *Elaeis guineensis*. Hopefully, this is the last time you will hear me mention freeze damage for a long time to come!

I would like to take this opportunity to thank everyone involved with clean-up on all three workdays this year. This volunteer effort, besides the diligent effort of the City of St. Petersburg Park crews, was very important in returning this unique public arboretum to presentable condition. So much so, that the St. Petersburg Chamber of Commerce chose to honor the arboretum with a beautification award!

Now for the good news, we need all of you for a cool fall workday on Sunday, October 20th. Start time will again be at 2 P.M., with finish time at your leisure. Come and have some fun amongst the palms in the park, please. As always, we should have some new treats for you to see.



With a truckload of "gold" a vicious attack dog is essential to repelling thieves. Condominium A Sutphin assumed the obligation & the cargo was save

ARENGA PINNATA IN CENTRAL FLORIDA

Mike Dahme

The continued survival of the sugar palm in the various locales in this, not so tropical, part of the state would be reason sufficient for comment, but that the specimens known from Cocoa Beach and near-by Merritt Island have commenced flowering requires notice. A recent visit to the 20 foot specimen (Figs. 53A) at Bud Wideman's (site of a 1995 meeting) disclosed a tree with three inflorescences open and a fourth in bud, with the perhaps unusual sequence of proceeding upwards (acropetally) as in the pleonanthic, rather than basipetally, as in the hapaxanthic, manner, i.e., opposite from that which literature indicates for this species. (Were this sequencing of inflorescence development to continue the plant would presumably continue growth indefinitely, but Bud has advised that a fifth inflorescence has appeared from a leaf base

below the first four.)

From Bud's the Merritt Island site, (first noted by Bernie Peterson), was visited where three specimens (Fig. 7 have been growing in a wooded, wet lot adjacent to a citrus grove. On a prior trip the remains of a progenitor on the ground amidst thick underbrush had been noted, so the present population is at least second generation. (On this trip we noticed extensive pilings of coquina edging what at one time had been ponds; clearly, the site had been someone's "playground"). All three of these specimens, two side by side, the other some distance away, were, as reported, in flower also. Of the three plants, however, only one had actually set fruit, on one inflorescence only. (None on the plant at Bud's had done so.)

From inspecting the four specimens (as well as those that have flowered at Joe Michael's in Wabasso) and reading accounts of the species, it is apparent that the Sugar Palm is either protandrous (when flowers of both sexes are present on an inflorescence—see Palms of British India and Ceylon, pp 354-5), ie., that the male flowers open and are shed before the female flowers are receptive, or that the flowers on an inflorescence are (as is the usual case with *Elaeis*) singly-sexed (through abortion: Genera Palmarum, p. 312). From which it follows that unless other inflorescences, either on the same individual or another, are functioning simultaneously, fruit set is unlikely. As it appears from Bud's observations that only one inflorescence is open at a time, it may be necessary to collect and retain pollen for manual application if a lone plant is to set fruit.

The question remains, however, as to why these four "chose" to flower simultaneously in the Summer of '96, an event obviously conducive to species survival. If the (relative) severity of the past Winter was a factor, then why has the large specimen at Leu Gardens near Orlando (which as reported by Eric Schmidt, was totally defoliated), which endures a harder winter each year than those in Brevard, not done so? Likewise, the (much older, 40 foot tall) individual at the former McKee Jungle Gardens (now McKee Botanical Gardens) in Vero Beach has not been seduced into flowering as yet.



Fig. 5

Flowering *Arenga pinnata* at Bud Wideman's, with most recently opened inflorescence at left.



Fig. 6
Close-up of the most recently opened inflorescence, the third on this plant, showing the flowers, which were male.

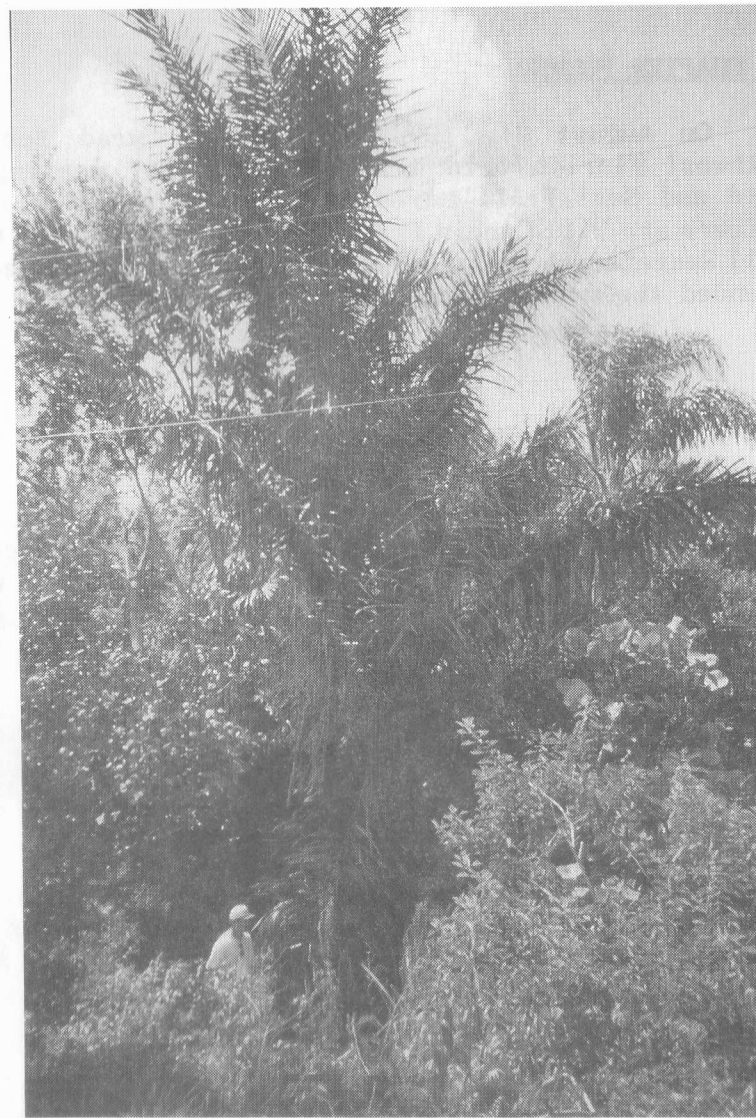


Fig. 7
Two of the three *Arenga pinnata* at the Merritt Island site. Inflorescence on the larger visible in front of plant.

NEW CHAPTER FORMED

On August 24, 1996 the Palm & Cycad Society Southwest Florida held its organizational meeting at David and Geri Prall's residence. The newly elected officers are Bill Garcia President, David Prall VP, Geri Prall Secretary & Sally Betts Treasurer. About 50 people attended the meeting including Ed & Nancy Hall.

SALE AT LEU GARDENS

The Harry P. Leu Gardens will be holding a plant sale April 5 & 6, 1997. The CFPS needs to be represented at this sale. Great efforts are being taken to make this sale noticeably better than the last one. Admission to the gardens will be free. So please plan to either attend or sell plants.

WANTED: A Phoenix hybrid in a 3-10 gallon container. Any combination of *P. dactylifera*, *P. sylvestris*, *P. canariensis* and/or *P. rupicola*. Please call Larry Bains at 407-894-7766.

Map To Bobick's

2A

