

CENTRAL FLORIDA PALM BULLETIN

VOL.13

NO. 3&4

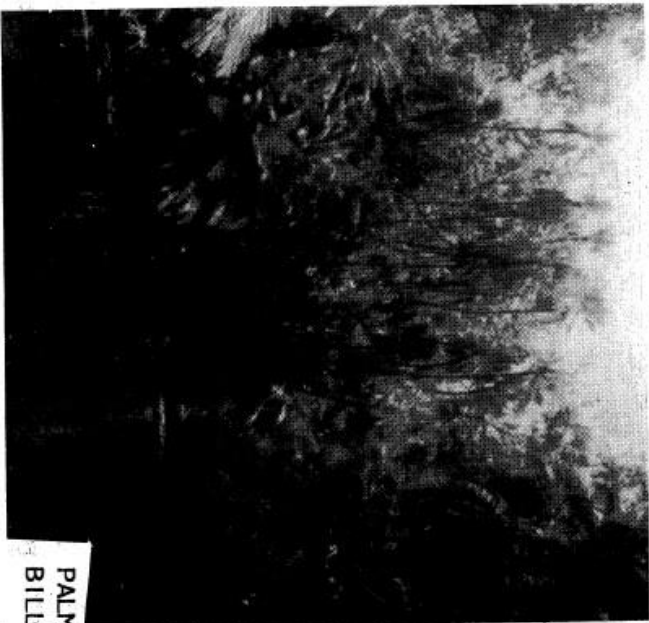


THE CENTRAL FLORIDA PALM SOCIETY

TREASURER & SECRETARY
ED & NANCY HALL
1111 GLEN GARRY CIRCLE
MAITLAND, FL 32751
Phone (407) 657-2039



FIRST CLASS



PALM GLADE PLANTED BY
BILL BIDLINGMAYER



TWO-HEADED PALM IN THE MAKING

For explanation of picture see IPS Board of Directors article.

The Central Florida Palm Bulletin is published four times annually and is free to members of the International Palm Society living within the free service area of the CFPS. We exist and operate solely on the goodwill of this membership. Your support is needed and encouraged.

SUBSCRIPTIONS: Anyone residing outside the free service area must subscribe. The cost is \$7.00 annually. All subscriptions run from January through December. Make check payable to the Central Florida Palm Society and send to Nancy Hall at 1111 Glen Garry Circle, Maitland, FL 32751. Telephone number 407-647-2039.

ARTICLES , NEWSLETTER CONTRIBUTIONS, ADDRESS CHANGES, & DONATIONS: Send to Ed & Nancy Hall at 1111 Glen Carry Circle, Maitland, FL 32751. Phone 407-647-2039.

Officers effective January 1994

President	Ted Langley
1st V.P.	Stacey Peacock
2nd V.P.	To be elected @ March Meeting
	Mike Dahme nominee
Secretary	Nancy Hall
Treasurer	Edward Hall

USF SPRING SALE

We have set a sales record each year the CFPS participated in the University of South Florida spring plant sale. Lets plan to do so in 1994. Per Ted Langley the 1994 event is scheduled April 30th and he is spear heading the sale for us. Don't wait until the last minute to contact him. If you sold in past years plan to use the same identification number. If you are a member of the CFPS but haven't sold previously Ted will assign you a number and tell you how to mark your plants. To contact Ted either call or write: 813-920-4746 or 17205 Gunlock Rd., Lutz, FL 33549. He will also need non-sellers to work at the sale.

CFPS BULLETIN HAS NEW EDITORS

Starting with this issue Nancy & Ed Hall have assumed responsibility for the publication of "The CFPS Bulletin".

Our past editor, Alan Ingalls relinquished the job due to excessive demands on his time. Last year Alan started a new business. In todays business world this requires an enormous dedication of time, leaving him none to enjoy his palms.

On behalf of the members of the CFPS, your new Editors want to express our appreciation to Alan for the dedication & effort he put forth during the last two years. It is only through the efforts of Alan and people like him that our society continues to grow.

Your new Editors want to solicit contributions from the membership. Articles are always welcome but if you have ideas on articles you would like to see, palm collections to visit or people interested in palms, that aren't active in the society drop a line or call you Editors.

Treasurers Report

As of January 13, 1994, the CFPS financial status is as follows:

Certificate of Deposit #1	\$ 4604.27
Certificate of Deposit #2	5036.84
Checking Account Balance	2866.29
Cash Box	131.00
Total	<u>\$12638.40</u>

Maxwell Stewart estate in Mobile. There we participated in a local meeting and enjoyed an excellent lunch. During a tour of Maxwell's palm collection we were shown an experiment. (see picture of "two" headed palm.) The palm shown in the picture has been cut vertically down to the growth bud and a metal plate inserted in the cut. Prior to this surgery, another palm was cut but continued to grow in normal fashion. This time the cut was made deeper to encourage the formation of multiple growth heads. Updates on this experiment will be made as information becomes available.

CFPS MEMBERS ENJOYING
FT. MEYERS MEETING



HILLSBOROUGH COMMUNITY COLLEGE GEARS TO MEET THE GROWING NEEDS OF PLANT PEOPLE

The continuing education program at HOC offers non-credit courses designed to meet the professional and occupational requirements of plant people. For details of the numerous courses call the Horticulture Dept. at the Plant City Campus 813-757-2102 or write: 1206 N. Park Rd., Plant City, FL 33566-2799. The courses cover the gambit from plant identification, diseases control, plant physiology & horticulture science. These courses cover the needs of both the home hobbyist and the nursery employee.

A JOURNEY OF PALMS
by Rick Leitner
Education Chairman, South Florida Chapter

Invited to attend Central Florida's annual Palm Meeting in Ft. Meyers, we set out from Miami thinking this was a great opportunity to see public and private gardens of the West Coast.

This gathering of palm enthusiasts from as far apart as Live Oak and Tavernier was geared for socializing, interaction, education and pure enjoyment. I was really looking forward to getting away and greeting unfamiliar gardens and people. Our meeting place was to be at the Thomas Edison/Henry Ford Estates in Olde Town Fort Meyers.

Sandwiched between the Caloosahatchee River and a bustling downtown street, the estates were shielded from the traffic noise by the lush tropical foliage. In fact, no one would expect this expanse of property to sit right downtown. I typically do not visit "touristy" spots when out of town. I prefer to do more of my own explorations, but I had heard nice things about it...and what better was to spend the weekend than with "Palm Nuts"?!

After arriving fashionably tardy, the Central and South Florida representatives welcomed one another and we were on our way through the grounds with a tour guide. Our guide was a bit intimidated when he realized this was no ordinary bunch of "tourists". In fact he eventually let us lead ourselves through the garden and picked back up with us once the homes were explained. What caught my eye were three exceptionally well nourished, mature Archontophoenix. Tropical fruit, bamboo, heliconia, shrubs and other majestic palms graced the grounds with a sense of accomplishment. We ate at a quaint outdoor cafe beneath Live Oaks and Spanish moss, listening to great conversation and music.

Next on the agenda was a private garden within walking distance from the Edison house. A casual walk down a street with huge royals will always be a pleasure. The palm garden that we were invited to was quite impressive. Actually it was a group of two homes (or more) that had been joined by a massive courtyard with a roman lily pond, butterfly garden, Spanish

CFPS KICKS OFF 1994 WITH EXCITING TWO-DAY MEETING

As a result of the efforts of John Kennedy of Vero Beach & Mike Dahme of Grant, the society has an exciting 2 day meeting late this winter. Secure your room reservations right away and clear your calendar for the first of several meetings planned for this year.

The nine events planned for the March meeting are all concentrated in the Vero Beach area and for your Editor will be a return to the site of his first palm society meeting. About 15 years ago Dave Besst asked Nancy & I if we were interested in visiting Bidlingmayers' palm collection. The CFPS had a Sunday afternoon meeting and one of the noted attendees was Dent Smith. Being my very first such meeting I was so excited it is doubtful if I will ever forget the event.

Another major stop will be the site of the old McKee Jungle Gardens. Many of our members are too young to remember this lovely garden since it closed in 1976 but Nancy & I had the privilege to visit the garden in the mid 60's. That row of royal palms that greeted you as you entered the garden was in itself an exciting scene.

Our meeting will conclude Sunday afternoon with a return visit to the Michaels' estate. This is one of the must-see palm collections in the Central Florida area.

LARGE ACROCOMIA
TOTAL PLANTED
BY BIDLINGMAYER



IPS BOARD OF DIRECTORS MEETING

Oct. '93 found Nancy & I in the heart of the French Quarter in New Orleans for the Board of Directors meeting. What an exciting location with the hotel on Bourbon Street we spent every free moment strolling the streets.

The meeting kicked off with a visit to the beautiful garden a local palm grower that included dinner with the local palm society members. This was followed the next day with a tour of a State Park which included a magnificent stand of Sabal minor. Most had trunks several feet tall. Then down to business.

The new Seed Bank Chairman recommended keeping the bank operating and changing to two seed lists. One called "simple" being a list of the more common palm seeds. The second list being rare seeds. Also the Seed Bank would return to the honor system and not require pre paying for seeds.

Sale of the Chamaedorea book was reviewed but no action was taken. At present only about 1700 of the 5000 copies were sold. The concern being the rate of sales.

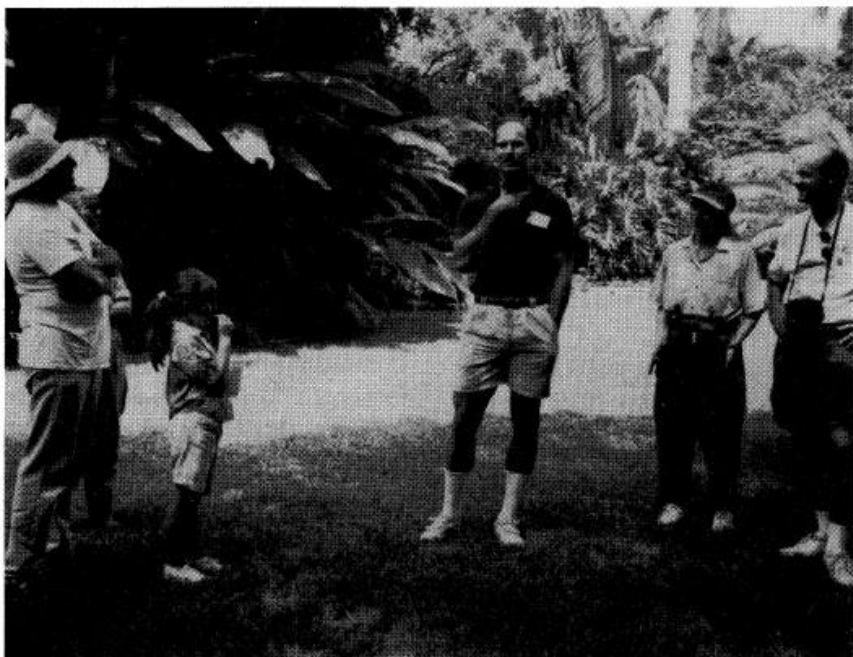
Due to some recently published articles in "Principes" it was suggested Martin Gibbons be added as a co-editor for horticultural correctness.

The editors are preparing an index that will cover vol. 1 through 37 inclusive.

The lack of membership growth in 1993 was discussed. Efforts will be undertaken to ensure the IPS meets the needs of the membership. The state of the economy was believed to be part of the reason membership renewals were down along with the slower sales of the Chamaedorea book. But the IPS Directors are concerned about meeting the needs and desires of the general membership.

The status of the 1994 IPS Biennial in Venezuela was reviewed and the meeting adjourned.

The following day the meeting shifted to the



LIN BOCHETTE DESCRIBING EVOLUTION OF GARDEN



CFPS MEMBERS TOURING EDISON GARDEN

Saturday

(10:00am) First stop, on the south side of Fort Pierce, is at Sam Durham's property. Sam's house is surrounded by at least 20 Sabal domingensis (and some hybrids with S. palmetto). The oldest of these huge palms is about 30 years old. Sam also has a collection of tropical fruit trees.

(11:15am) Second (optional stop) in Fort Pierce is at Ric's Garden World to see the two "mule" palms, Syagrus x Butia. Ric and Denise Ebner hosted the May, 1985, meeting at their garden center.

(11:30am) Third Fort Pierce stop is at Heathcote Botanical Gardens, an old nursery transformed by local volunteers. Director Lib Tobey has installed a Palm Walk. These mostly young plants will, hopefully create a wider public appreciation of palms in the area.

(12:00 noon) Lunch break: brown bag at Heathcote, Ryan's Family Steak House, Miami Subs, McDonald's, etc. The usual amenities of Highway 1 are nearby. The next stop is 20 minutes north.

(1:30pm) The fourth visitation is just south of Vero Beach at Garden Grove. This subdivision occupies the site of Bill Bidlingmayer's palm collection, begun in the 1960s. Many mature palms have been preserved, including large Copernicia macroglossa, two 20-ft. C. baileyana and C. alba, as well as a 25-ft. Bismarkia. There are quite a few other palm treasures at Garden Grove.

(3:00pm) Fifth stop of the day is at the house of Ed and Joyce Carlson, west of Garden Grove, where there are literally hundreds of palms in the ground, many of which are sizable and are usually seen farther south. There is a wide assortment of Chamaedoreas, Pritchardias, and Veitchias. Ed also has 40 species of cycads. A palm sale will end the afternoon.

The afternoon wrapped up with an outdoor tropical drink over looking the river. This restaurant/bar combination dumped mega bucks worth of landscaping for atmosphere and effect. With gangplank trails Wodyetia, Sabals, Coconuts, Livistona, and Phoenix mixed together better than the pineapple juice and rum that I was drinking. It was gratifying to see that someone like the owner of this establishment put so much faith into palms.

The evening was spent having dinner, and than enjoying a slide presentation about interiorscapes and palms. Informative and interesting...Chamaedorea species, Kentia and Syagrus species to name a few are used by homeowners, office personnel and hoteliers to put a little green warmth indoors. I gave a slide presentation on how we are viewed as the "palm experts" from the community, whether we view ourselves as this or not. The South Florida chapter has put together a large professional exhibit to be used for education at home shows, garden sales, and community events and this was the focus of my talk. There was a palm raffle by Geri and David Prall, our hosts for the weekend and tomorrow's palm to concluded the busy weekend.

The Prall garden is a spectacular three plot palm extravaganza, Copernicia, the multiple headed Roebillini, Royals, Phoenix, Licuala and Vetchias are a few of the species here. The love that goes into this garden is not overlooked. There was not one palm that looked to be struggling. Everything was well fed, watered, and mulched; intermixed with unusual ground covers, cycads, bromeliads and tropical shrubs. This garden is not to be missed if you are in the Cape Coral area. The Prall's would certainly like to extend a warm welcome to anyone in the area who would like to visit. A palm sale followed a tour given by David, where one could pick up a couple of small potted palms or cycads.

On the way home across Alligator Alley it was nice to just gaze across the horizon of stately cypress trees, and their buttresses, Sabals, Serenoa and all the Everglade's wildlife not commonly seen in the city. South Florida should be regarded as the land of big sky once into the Everglades. If you ever get a chance to go on a field trip with a bunch of palm nuts, do so. A weekend viewing public and private gardens will expand

many survivors to give hope to those of us who plant in less benign areas. A catered lunch will be available, with a choice of three kinds of sandwiches at \$3.00 each; contact Mike Dahme (Box 89, Grant 32949 or 407-724-8417) by March 12. A palm sale will conclude the day.

For any further details, contact John Kennedy in Vero Beach (407-567-9587) or Mike Dahme in Grant (407-724-8417).

Motels-Vero Beach

A new Comfort Inn at Hwy 1 and 10th Street, behind Shoney's. A block of rooms has been set aside for March 19; reservations must be made by February 20 to obtain the special price. One person is \$58.50; two persons, \$67.50; extra person, \$5.00. Call the motel 407-569-0900 and mention group code PALM.

Four older motels farther north on Hwy. 1 are:

Howard Johnson Lodge(at 17th Street); \$68 Double; 407-567-5171.

Landmark Motor Lodge(at 17th Street); \$47 double; 407-562-6591.

Dolphin Motel(at 18th Street); \$27 double; 407-567-5349.

Budget Inn of Vero Beach(at 20th Street); \$38 double; 407-567-4331.

The prices for these four motels were quoted in early January and may vary.

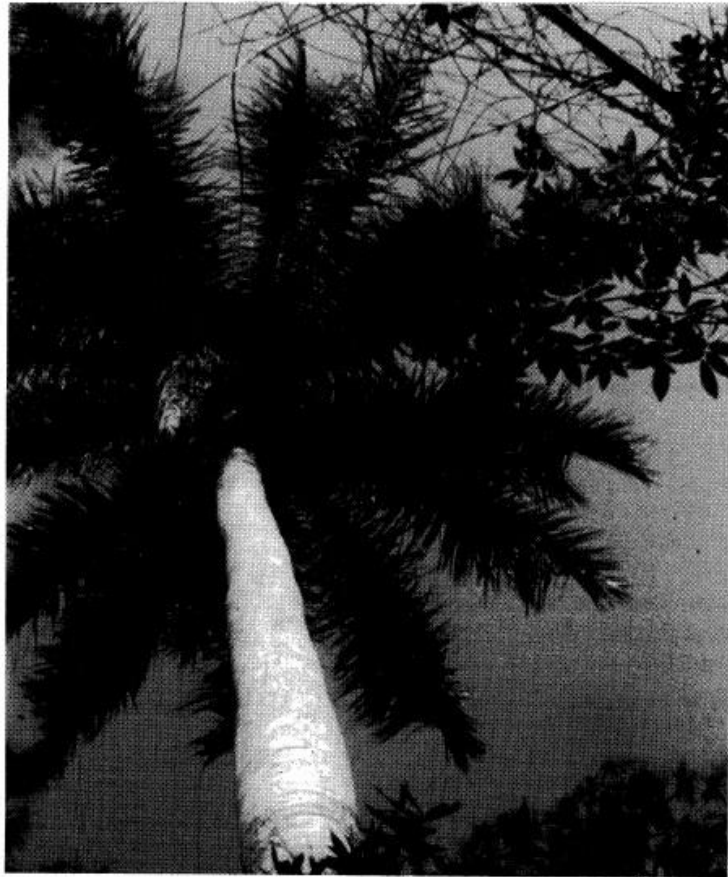
Restaurants-Vero Beach

Two moderate price restaurants:

Wayside Inn(English-y), Hwy 1, west side, just north of 20th Street.

Vincent's Pizza and Brew (Italian, more than pizza), 21st Street, three blocks east of Hwy 1 in Miracle Mile Plaza, north side of street.

There are other restaurants on Hwy. 1, including a Morrison's Cafeteria in the Vero Mall (at 12th Street). More expensive restaurants are on Royal Palm Blvd. (mainland side of SR 60) and on the beach (over the SR 60 bridge to the ocean, to Ocean Drive, or to A1A south.



LARGE ROYAL WAITING FOR US AT MCKEE

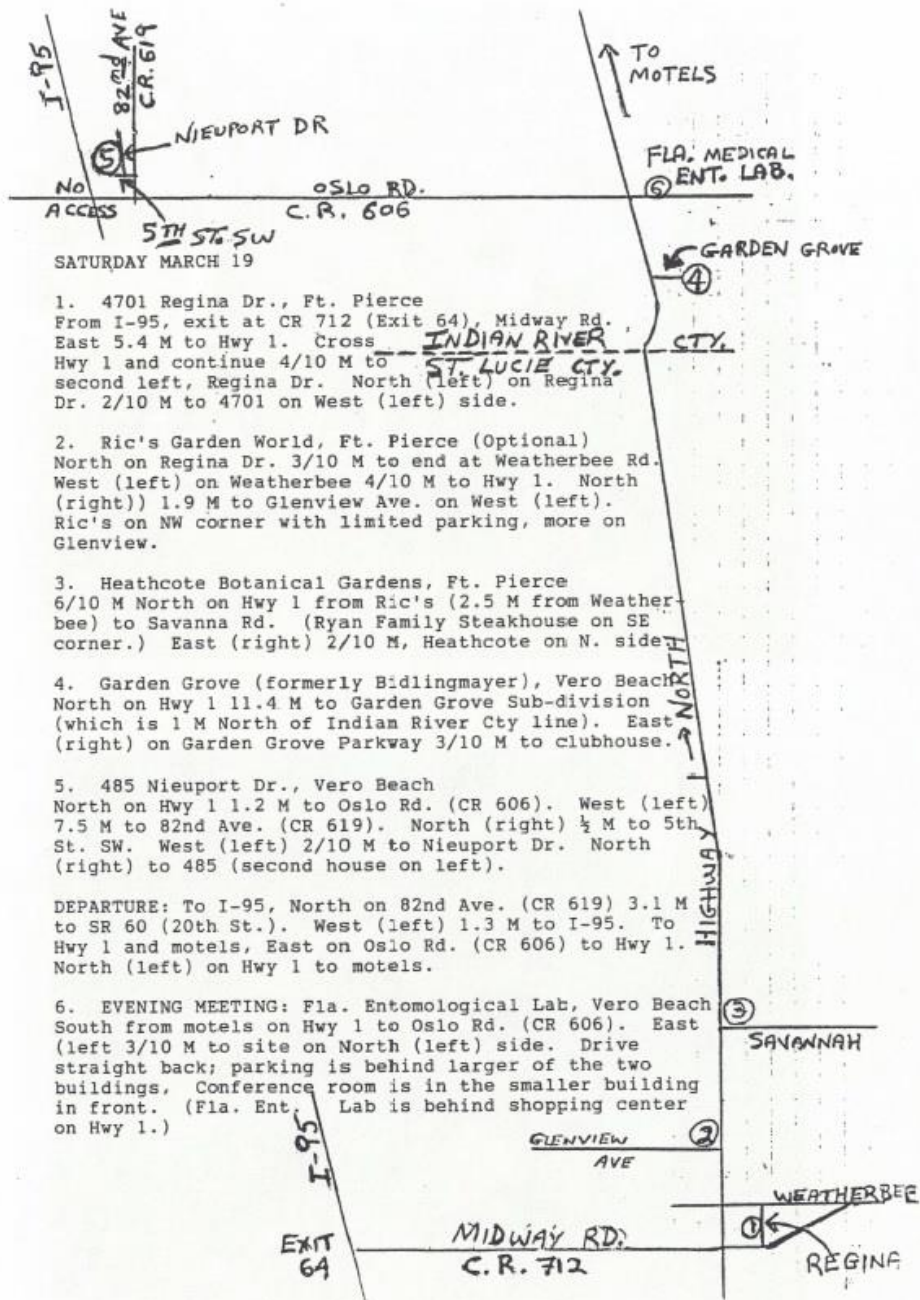
AUCTION ANNOUNCEMENT

There will be an auction during the Saturday evening portion of the CFPS meeting. Following Paul Craft's slide presentation a wood carving of a palm by Bernie Peterson will be auctioned with the entire proceeds going to the CFPS. The carving will be on view prior to Paul's presentation. Bidding will begin at \$150.00. The carving made of solid mahogany, measures a minimum of 1.5"X14"X24". On Sunday Bernie will have several more carvings for sale.

architecture, and of course a collection of mature potted palms. It was explained to us that this gentleman traveled the world often and brought back seeds, cuttings, and seedlings for his personal paradise. Many chose to explore on their own, others went with a formal tour that the host provided, and others still sat beneath large palms in the shade admiring the beauty of it all. There were Veitchias, Pritchardias, Royals, Coconuts, Sabals, Phoenix, Elais and Arecas to mention a minority of his collection. Furthermore, he had a good representation of rare tropical flowering ground covers, shrubs, heliconia, and trees. It was a real pleasure relaxing there, lying in the shade, rehydrating with cool fruit juice.

Still within walking distance we were directed to a smaller private garden that was surrounding an older Victorian style wooden home. Most chose to treat themselves through this interesting garden as there was no host. We were informed that this was the home of the garden caretaker for Mr. Thomas Edison. Being about 95 he wasn't well enough to greet us but allowed us the pleasure of seeing his extensive croton collection. I personally believe crotons have gotten a bad rap; I like the continual foliage color they provide. I have never heard of anyone who knew every croton common name...and here it was from Charles Lindbergh, to Spotlight to Rebecca of Sunny Brook Farm. His palms were as large as you can imagine and in a jungle-like atmosphere with vines and philodendron climbing. A thunderstorm cut our visit short, but not our spirits!

It was on to a downtown Ft. Meyers Palm Arboretum being established by the Ft. Meyers Garden Club and others. Right on the river leading to the Gulf of Mexico, this spot provided additional warmth during strong winter cold fronts. A fairly new park, this small plot of land was something the Broward and Dade counties lack; a very public spot used for education in a highly visible location. Every palm was labeled detailing common name, botanical name and native location. There were about 50 palms, some large and mature like Phoenix, Washingtonia, and Coconuts towering over younger specimens of Licuala, serenoa, and Butia. With a little more time and work, this spot will be priceless---certainly more than what we've got.



1. 4701 Regina Dr., Ft. Pierce
From I-95, exit at CR 712 (Exit 64), Midway Rd. East 5.4 M to Hwy 1. Cross INDIAN RIVER CTY. Hwy 1 and continue 4/10 M to ST. LUCIE CTY. second left, Regina Dr. North (left) on Regina Dr. 2/10 M to 4701 on West (left) side.

2. Ric's Garden World, Ft. Pierce (Optional)
North on Regina Dr. 3/10 M to end at Weatherbee Rd. West (left) on Weatherbee 4/10 M to Hwy 1. North (right) 1.9 M to Glenview Ave. on West (left). Ric's on NW corner with limited parking, more on Glenview.

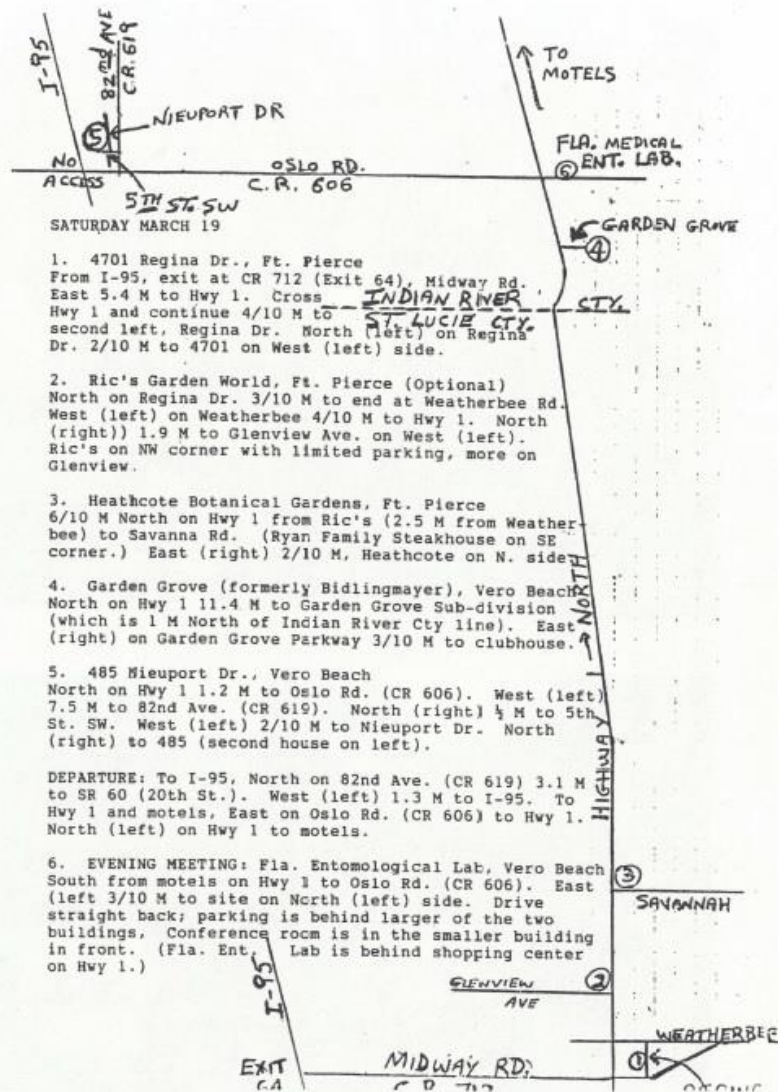
3. Heathcote Botanical Gardens, Ft. Pierce
6/10 M North on Hwy 1 from Ric's (2.5 M from Weatherbee) to Savanna Rd. (Ryan Family Steakhouse on SE corner.) East (right) 2/10 M, Heathcote on N. side

4. Garden Grove (formerly Bidlingmayer), Vero Beach
North on Hwy 1 11.4 M to Garden Grove Sub-division (which is 1 M North of Indian River Cty line). East (right) on Garden Grove Parkway 3/10 M to clubhouse.

5. 485 Nieuport Dr., Vero Beach
North on Hwy 1 1.2 M to Oslo Rd. (CR 606). West (left) 7.5 M to 82nd Ave. (CR 619). North (right) 1/2 M to 5th St. SW. West (left) 2/10 M to Nieuport Dr. North (right) to 485 (second house on left).

DEPARTURE: To I-95, North on 82nd Ave. (CR 619) 3.1 M to SR 60 (20th St.). West (left) 1.3 M to I-95. To Hwy 1 and motels, East on Oslo Rd. (CR 606) to Hwy 1. North (left) on Hwy 1 to motels.

6. EVENING MEETING: Fla. Entomological Lab, Vero Beach
South from motels on Hwy 1 to Oslo Rd. (CR 606). East (left) 3/10 M to site on North (left) side. Drive straight back; parking is behind larger of the two buildings. Conference room is in the smaller building in front. (Fla. Ent. Lab is behind shopping center on Hwy 1.)



1. 4701 Regina Dr., Ft. Pierce
From I-95, exit at CR 712 (Exit 64), Midway Rd. East 5.4 M to Hwy 1. Cross INDIAN RIVER CTY. Hwy 1 and continue 4/10 M to ST. LUCIE CTY. second left, Regina Dr. North (left) on Regina Dr. 2/10 M to 4701 on West (left) side.

2. Ric's Garden World, Ft. Pierce (Optional)
North on Regina Dr. 3/10 M to end at Weatherbee Rd. West (left) on Weatherbee 4/10 M to Hwy 1. North (right) 1.9 M to Glenview Ave. on West (left). Ric's on NW corner with limited parking, more on Glenview.

3. Heathcote Botanical Gardens, Ft. Pierce
6/10 M North on Hwy 1 from Ric's (2.5 M from Weatherbee) to Savanna Rd. (Ryan Family Steakhouse on SE corner.) East (right) 2/10 M, Heathcote on N. side

4. Garden Grove (formerly Bidlingmayer), Vero Beach
North on Hwy 1 11.4 M to Garden Grove Sub-division (which is 1 M North of Indian River Cty line). East (right) on Garden Grove Parkway 3/10 M to clubhouse.

5. 485 Nieuport Dr., Vero Beach
North on Hwy 1 1.2 M to Oslo Rd. (CR 606). West (left) 7.5 M to 82nd Ave. (CR 619). North (right) 1/2 M to 5th St. SW. West (left) 2/10 M to Nieuport Dr. North (right) to 485 (second house on left).

DEPARTURE: To I-95, North on 82nd Ave. (CR 619) 3.1 M to SR 60 (20th St.). West (left) 1.3 M to I-95. To Hwy 1 and motels, East on Oslo Rd. (CR 606) to Hwy 1. North (left) on Hwy 1 to motels.

6. EVENING MEETING: Fla. Entomological Lab, Vero Beach
South from motels on Hwy 1 to Oslo Rd. (CR 606). East (left) 3/10 M to site on North (left) side. Drive straight back; parking is behind larger of the two buildings. Conference room is in the smaller building in front. (Fla. Ent. Lab is behind shopping center on Hwy 1.)

MAY MEETING

According to Stacey Peacock, he is planning a spring meeting in the Sarasota-Englewood area. Two of the stops will include the residences of Byron & Libby Besse of Sarasota and Michael Perry of Englewood. Both have mature-extensive collections of palms & cycads.



LIN BOCHETTE'S GARDEN

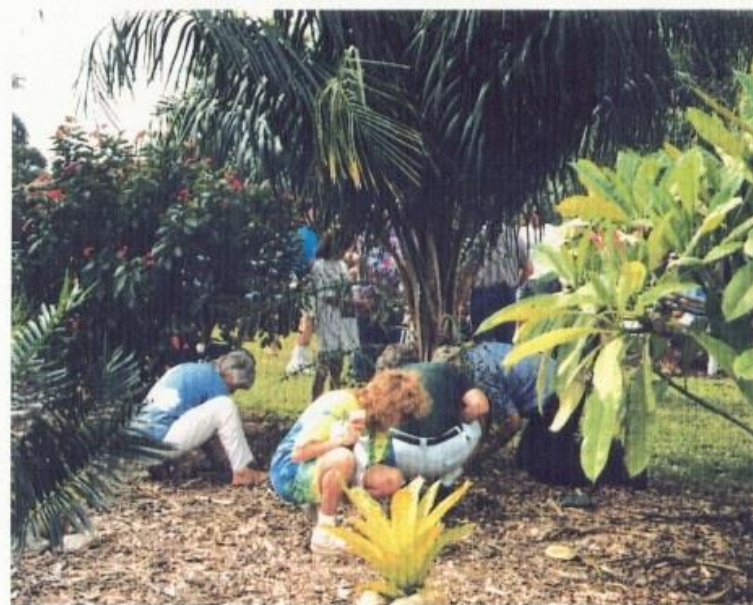


DR. MERRILL WILCOX & DAVID PRALL
ENJOYING PALMS



LIBBY BESSE, DAVID PRALL, ROY WORKS &
MICHAEL PERRY TOURING PRALL'S GARDEN

9



HARVESTING PALM "GOLD" AT THE PRALLS

10