

CENTRAL FLORIDA PALM BULLETIN

VOL 10 NO. 2

APRIL 1990



ABOVE: Reproduction of a wood engraving by the artist M.C. Escher done originally in two colors. Titled "Palm" and done in 1933.

SPECIAL FOCUS THIS ISSUE: THE FREEZE OF
CHRISTMAS 1989

THE CENTRAL FLORIDA PALM SOCIETY NEWSLETTER

Published at Palmhead
Stacey P. Peacock, Editor
Rt. 2 Box 168
Zolfo Springs, Fl. 33890
Ph # 813-452-2798

President: Jerry Keuper
Melbourne Beach
Vice-Pres: Karen & Tony Rodgers
Orlando
Vice-Pres: Jerry Shrewsbury
St. Petersburg
Treasurer: Ed Hall
Maitland
Secretary: Nancy Hall
Maitland



FIRST CLASS

The Central Fl Palm Bulletin is published four times per year and is free to members of the Central Fl Chapter of the IPS. Cost is \$7.00 annually for all other members in the USA. Please address all changes in address, donations and subscriptions to Nancy & Ed Hall in Maitland :

ED & NANCY HALL
1111 GLEN GARRY CIRCLE
MAITLAND, FL 32751



FIRST CLASS



REMOVE THIS STAPLE ONLY

COLD DAMAGE: CAPE CORAL/FORT MYERS

We made some interesting observations while driving to the Central Florida Palm Sale at Leu Gardens. The Queen Palms (*Syagrus romanizofiana*) north of Wauchula (Hardee County) looked worse than Coconuts and Royal Palms in the Fort Myers area. Although the Christmas freeze treated us better than our Central Florida neighbors, a low of 27-28 degrees took its toll on our tropical landscapes. Everyone was surprised at the severity of damage in Royal palms. To help preserve Fort Myer's City of Palms title, the City sprayed copper fungicide on its Royals lining McGregor Boulevard and other roads. Thankfully healthy Royals are pushing new growth. The same is true of Coconuts. Palms in good healthy condition before the freeze are showing signs of new growth. Another factor in the survival was the length of time the plant was in the ground. Established plants weathered the cold so much better than first or second year plantings.

Other palms don't look like they will recover as well. Arecas (*Chrysalidocarpus lutescens*) are now suffering from bud rot. Crownshaft palms with the exception of *Archontophoenix cunnighamiana* were severely damaged. *Elaeis* are severely damaged.

There was only minor frond damage on *Pseudophoenix sargentii*, *Coccothrinax*, *Acrocmia*, *Acoelorrhaphes wrightii*-*Paurotis*. We were surprised how well *Triangles* (*Neodypsis decaryi*) tolerated the cold. The palmate fronds of *Bismarkia*, *Latanias* were damaged severely but the palms are pushing new growth. Our *Livistona decipiens*, *Copernicia* collection and *Phoenix* collection were untouched.

The river did not afford any protection from the Christmas freeze. Our property in Cape Coral as well as riverfront Edison Home in Fort Myers suffered similar damage.

Nicholas Weller, parks maintenance supervisor for Edison Winter Home, and Mark Hooton, horticulturist allowed us to tour the grounds and survey the damage.

We donated a *Thrinax morrisii* for their native palm collection. A *Sabal Etonia* from the Central Palm Society at Leu Gardens sale completed the native palm collection at Edison Home.

Nick would like to set up a seed/seedling exchange program (palms and as well as other plants. If anyone is interested in participating, please contact me.

CHRISTMAS FREEZE 1989
CAPE CORAL - FORT MYERS (27-28 Degrees)

PALM TREE GARDENS

CAPE CORAL, FLORIDA

David & Geri Prall

Minor Frond Damage

Pseudophoenix sargentii
Coccothrinax
Acrocmia
Acoelorrhaphes wrightii-*Paurotis*.
Archontophoenix cunnighamiana
Neodypsis decaryi
Bismarkia
Latania

No Damage

Livistona decipiens
Copernicia (all)
Phoenix (all)
Rhapis
Thrinax morrisii
Trithrinax

Severly Damage

Chrysalidocarpus lutescens (Arecas)
Elaeis
Cocos Nucifera (Coconuts)
Roystonea
Dictyosperma
Hyophorbe
Pritchardia

Note: Palms in protective areas of Sanibel had little damage if any, but the damage in inland Lee County where it was several degrees colder was much worst than the coastal areas.

FROST PROTECTION AT sugar mill not affected by power outages.

A combination of Agryl P-50 and candles proved its worth during the Christmas freeze.

Borrowing a trick from the strawberry and vegetable growers, we purchased a 12x 390 ft. roll of Agryl's heaviest material because we liked its specs. Frost protection down to 28 degrees, light weight and porous ; so there was no need to remove it, and no need for supports in most applications.

In some ways, it surpassed our expectations. 21 degrees with ice , wind, and snow is a lot colder than a 28 degree frost. So it was it was a thrill to see how good our petunias looked after three days under this cover; no damage, some new growth, and flowers! Uncovered petunias nearby were wiped out.

Larger plants had supplemental heat from lighted candles. Results varied in proportion to the number of candles burned, and our ability to get covers in place and candles purchased and lighted in time.. Hibiscus, with two layers of Agryl over a bamboo framework and an average of 1 candle to 4 plants ; had no damage. Cycads, tree ferns, staghorns, and begonias all survived . It is interesting to compare the degree of damage with the number of candles used.

Our best candles were the 12 inch tapered candles which burned for 8 hours. Fatter candles sometimes drowned their wicks in the puddles of melted wax, making them undependable.

By "Poor Martin"
(Martin Wittbold)

FREEZE FOCUS:

SORRENTO FREEZE REPORT by Kenneth Green

Dear Stacey,

Per your request in the Jan 1990 Palm Bulletin. Following is my freeze damage.

Our nursery's principal business is greenhouse grown tropical foliage for the wholesale market but I'm attempting to start a small commercial amount of palms from seed that are hardy to this area. The Christmas freeze was very hard and I recorded nearly 3 hours at between 14 & 16°F.

- ****314 *Chamaerops humilis*, 2 yrs old, gal pots, no damage
- ****257 *Livistona chinensis*, 2yrs in 3-gal pots, 100% dieback, 98% coming back
- ****183 *Cocos australis* (Butia?), 4 yrs, 17 gal pots, 30 dead, all others lost hearts but may be recovering
- ****590 *Chamaerops humilis*, 1st year seedlings, under shade, 502 dead outright
- **** 50 *Washingtonia robusta*, 3 yrs old in 17 gal pots, 49 dead, 1 recovering
- ****761 *Livistona chinensis*, seedlings in gal pots under shade, 97% dead.
- ****239 *Serenoa repens*, half blue and half green, 1 yr in gal, No Damage
- ***1632 *Washingtonia robusta*, seedlings in gallons under shade, 85% losses
- ****1363 *Trachycarpus fortunei*, seedlings in gal pots under shade, no damage
- **** 50 *Phoenix canariensis*, 2 yrs old in 3-gal pots, 100% top growth dead, 40% showing signs of recovery
- **** 50 *Chamaerops humilis*, 3 yrs old in 3 gal, 2 dead, others lost hearts but appear to be coming back
- ****227 *Cycas revoluta*, 4 yrs old in 5 gal pots, 100% top growth dead, all but 4 seem OKay.
- ****600 *Cycas revoluta*, seedlings in gal pots, 100% dead.

Sincerely,
Kenneth B. Green

Enclosed is a chart in response to your call for information in regards to the Christmas '89 Freeze. My palm experience is limited so I made this table to record the event. Here are a few notes that should be considered as you go through my list:

- 90% of my palms and cycads have been in the ground for 3 years or less. Most are immature, some are just seedlings. The exceptions are the queen palms & 1 Washingtonia that are mature.
- I live on a 1/2 acre lot about 1/2 mile from the ocean (3/4 mile from the Indian & Banana Rivers) in Indian Harbor Beach (near Melbourne).
- I have little shade and the location offers little wind protection
- I was out of town during the freeze so my plants had absolutely no protection. My min-max thermometer recorded a low of 22°F but I have no idea as to the duration of temperatures.
- Generally, all of the standard central FL palms fared much better in my yard than my neighbor's yards. I still had some surprises and disappointments.
- Palms with spikes that pulled out were cut back close to the bud and treated with Copper and/or Captan fungicide. Most have some signs of growth, though the crownshaft palms were hardest hit. My Pseudophoenix sargentii appears to be my only healthy survivor that's not a multitrunk palm in that category.

JIM PARKHURST

PALMS

NAME	KEY	DAMAGE AT 3 WKS	DAMAGE AT 7 WEEKS
<u>Arenga Englerii</u>	PH1	10%	Still green, some broken stems
<u>Caryota Mitis</u>	PF2	100% Spike out	Looks bad
<u>Cocos Nucifera</u>	PF1	100% Spike stuck	Spike won't pull, slight growth
<u>Latania Lontaroides</u>	PF1	100% Spike out	Looks dim
<u>Licuala Flabellum</u>	PH1	100%	Looks dim
<u>Phoenix Reclinata</u>	O 1	10%	Some burn & broken stems
<u>Phoenix Roebilini</u>	PH2	95 & 100%	Both recovering
<u>Phoenix "Cluster Pygmy"</u>	PH1	10%	Recovering from bad spots
<u>Phoenix Rupicola</u>	O 1	80% Spike out	Small signs of growth
<u>Rhapis Excelsa</u>	PT3	5% Few spikes out	Green but many hearts pulling
<u>Rhapis Humilis</u>	PT1	10% of spikes out	Still green, all spikes out
<u>Roystonea Regia(?)</u>	O 1	100% Spike out	Good Bye.
<u>Thrinax Radiata</u>	PH1	100% Spike out	Looks dim...little growth
<u>Veitchia Merrillii</u>	PH5	100% Spikes Out	All gone!
<u>Chrysalidocarpus (Areca)</u>	PH2	100% Spike Pull Out	New growth!
<u>Archontophoenix</u>	PF&		
<u>Cunninghamiana</u>	PT1	100% Cut Back	Not good
<u>Coccothrinax Crinita</u>	PT1	100%	New growth! (Thought dead)
<u>Coccothrinax Argentea</u>	PH2	100% Side pullout 100% Spike OK(?)	Big palm is sad Small ones some growth
<u>Pseudophoenix Sargentii</u>	PH1	100%	Recovering
<u>Syagrus Comosa</u>	O 1	100% Spike out	Oh well
<u>Syagrus Schizzophylla</u>	PT1	100% Spike out	Adios.
<u>Acrocomia Totai</u>	O 1	80%	Recovering
<u>Acoelorrhaphe wrightii</u>	PT1	No damage	Green but many spikes pull out
<u>Syagrus romanzoffianum</u>	O10	10%	Green, 1 of 10 pulled heart
<u>Coccothrinax argentata</u>	PH1	No damage	Questionable condition

CYCADS

<u>Encephalartos ferox</u>	O 1	100%	Soft caudix
<u>Ceratozamia mexicana</u>	PF1	100%	New growth (Robusta variety)
<u>Ceratozamia keusteriana</u>	PF1	100%	New growth!
<u>Ceratozamia norstogii</u>	PH2	100%/90%	No growth but hopeful
<u>Cycas media</u>	PT1	100%	New growth
<u>Cycas circinalis</u>	PF1	100%	New growth
<u>Zamia furfuraceae</u>	PH2	99%	New growth
<u>Zamia integrifolia</u>	O 9	10%	Looks fine
<u>Z. integrifolia (var)</u>	PT6	95%	No growth yet (Caribbean type)

PALMS THAT WERE UNDAMAGED OR VIRTUALLY UNDAMAGED: Butia capitata, Chamaedorea radicalis, Chamaerops humilis, Chamaedorea microspadix, Livistona australis, Livistona chinensis, Phoenix canariensis, Phoenix dactylifera, Phoenix hybrid, Phoenix hybrid (blue), Rhipidophyllum Hystrix, Sabal causiarum, Sabal palmetto, Serenoa repens, Thrinax microcarpa (morissii), Trachycarpus fortunei, Washingtonia filifera & robusta, Copernicia alba, Trithrinax acanthacoma, Sabal minor, Sabal etonia, Livistona chinensis/decipiens, Livistona decipiens, Syagrus X Butia hybrid, Jubaea chilensis.*****CYCADS*****Encephalartos ghellinkii, Bowenia serrulata, Cycas revoluta, Dioone edule & spinulosum.

*****KEY***** P=Protection by---T=Tree; H=House; F=Fence
O=Open and unprotected NUMBER refers to # of specimens

FREEZE FOCUS

ORMOND BEACH REPORT

by Debbie Lowe

ORMOND BEACH - When the "big freeze" didn't come on Thursday as predicted, we began to hope (even though we knew better) that maybe, just maybe it wouldn't come at all. Friday came and went with 50° temperatures and a misty rain. Saturday brought Christmas shopping and 47° at 9 a.m. We pulled into our yard exactly at noon and felt a definite change in the temperature. A quick glance found the thermometer at 33° and falling rapidly. We had been caught off guard! Since we have a young palm collection we were able to cover or somewhat protect most plants. Unfortunately, we couldn't move fast enough. As we attempted to protect our Rhapis, we found it's fronds turning to ice before our eyes. Light snow fell for a few minutes, but quickly disappeared.

After transforming our yard into a maze of plastic, cardboard and white Christmas lights, we waited. Saturday evening found us in Flagler Beach watching snow gather on the ground, praying that 20 minutes south would make a difference. Most bridges and some highways in the area were closed due to icy conditions. We returned Sunday morning to find icicles, no snow, no electricity and a very cold house. We lost power for hours at a time throughout the next two days, but were lucky enough to not have any water pipes freeze.

The next two days saw temperatures stay below freezing. By Tuesday, the air began to warm and we began to assess our damages. After first fearing we had lost everything, our inexperience led us to believe we had come through rather unharmed, but as the days passed, we began to see more and more damage. Our Queens (ranging from 3 to 7 years old) were the hardest hit, even after being heavily wrapped. Our largest and oldest palm, a Phoenix Reclinata, stayed green for 2 weeks before it showed signs of injury.

A Rhapis purchased at last year's Leu Gardens sale has become a bright spot among our brown collection. Although it had iced over, strings of lights thawed the fronds and prevented permanent damage.

Butia, Chamaedorea Radicalis and our Trachycarpus and Chamaerops groupings had proven themselves strong, but by February we found that over half of our palms had lost their "hearts". Quick calls to Stacey Peacock and Bill Hahn helped ease our worry, advising us not to give up too soon.

A March inspection proved they were right. Renewed growth has been found on the Reclinata, Brahea Armata, Livistona Chinensis and Robellini. We lost a Phoenix Canariensis, Washingtonia and a young Decipiens. The Queens have shown no effort in pushing and are slowly losing any green left in the trunk.

All and all, we feel rather lucky that more was not lost.



In our last issue Pam Vest reported seeing these two edifices in Ormond Beach next to the old Ormond Beach Hotel. During a recent trip to that area I managed to snap some photos of them. I could not get a complete shot of the 2-story "lodge" but have included the photo (above) to convey the size of the place. The house is quite charming (below). The buildings are located near each other on side streets directly adjacent to the hotel property's north side. The age of the structures are unknown to me but can probably be placed in the 20's or 30's or perhaps even earlier. Thanks to Debbie Lowe for also sending photos.



Photos: S. Peacock

LAKELAND FREEZE REPORT by MALCOM BURRIS

Feb 20, 90

Dear Mr. Peacock,

In response to your recent note regarding the freeze, here are some brief reports from Lakeland. Freezing temps occurred for 2 nights, with an official low of 22°F. Power was out overnight in some areas. In most areas power was out for only 1-hr periodically, or even 15-30 minutes.

As of today every *Syagrus romanzoffianum* is completely brown. Undoubtedly many of the larger ones will recover, but as yet there is no indication of such. This is throughout the city.

Phoenix canariensis have varying degrees of damage, with some in protected spots completely green. Practically all should recover, rapidly. *Phoenix reclinata* sustained more damage but these, too, will recover. *Phoenix roebelinii* are a sad sight at this time. Even some of the nicer older specimens may be lost. I wrapped my 15 yr old palm with a blanket and have a green bud. The one sizable *Phoenix dactylifera* that I have discovered in Lakeland appears healthy and flourishing.

The *Butias*, *Sabal palmettos*, *Trachycarpus*, and *Chamaerops humilis* were not damaged.

Acoelorapphe wrightii (*Paurotis*) fared surprisingly well. Some of the taller specimens are brown but damage this time was considerably less than in the early 80's. They became less popular in Lakeland after those freezes. I like them and hope to see more planted.

Throughout the city there are clumps of *Rhapis excelsa* that appear dead. This is true of all that I have seen. I cleaned out a clump 6 ft in diameter today. It has been there over 16 yrs, never showing cold damage. Only one green sprout, 6 inches tall, was found. Hopefully more will come from the roots. I had half a dozen in containers, closeby, that showed only mild damage.

A nice *Sabal mauritiformis*, one of my favorite plants obtained several years ago, sustained browning of all the leaves. I hope the bud survives. A *Sabal "Riverside"* also had browning of all the leaves. Surprisingly, 3 of these of the same age at Crescent Beach showed no sign of cold damage.

Washingtonia robusta planted throughout Lakeland sustained only browning at the distal parts of the leaves. Mr. Chuck Vilusis is chief of Landscaping & Parks for the city of Lakeland and has a special interest in palms. He has begun adding palms to many city plantings. The *Sabal causiarum* which he bought from Bernie Peterson of Rockledge Gardens last year (about 75? plants I believe;Ed.) are flourishing and showed no freeze damage.

E. augustii (*Chamaedorea?* Ed.) were not damaged. They should be used more in this climate.

Seven *Syagrus X Butia* hybrids in Crescent Beach sustained only some browning of the basal leaves. An older tree, much taller, has browning of all the leaves. In configuration, it is different from the other 7, so may be a little different genetically. The fronds are shorter, though it was a handsome tree. Crescent Beach is about 20-25 miles south of St Augustine: Temp= 17°F.

King Sagos (*Cycas revoluta*) weathered the freeze with some plants even remaining completely green. *Queen Sagos* (*C. circinalis*) throughout Lakeland are conspicuous for their dead appearance but should recover.

In general, the reaction of palms in this area was about as one would anticipate. *Rhapis* had taken previous freezes much better. I have not seen any of the unusual exotic palms surviving. I do not know of any crownshafts left in the area. The big *Royal Palm* which was carefully nurtured in a protected area at the Civic Center, was in a state of decay when I checked it today.

Malcom B. Burris

LEU GARDENS PALM SALE 1990



Photo: S Peacock

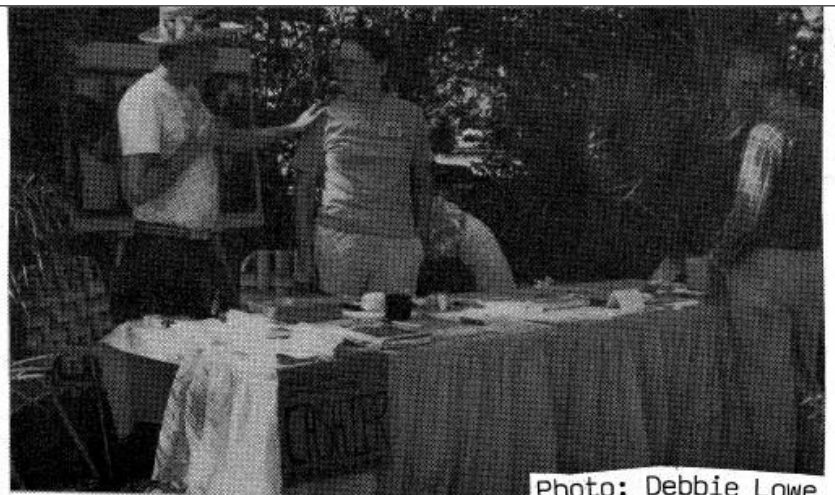


Photo: Debbie Lowe

For the second time in two years, the Central Fl Chapter participated in the Leu Gardens Plant Show & Sale by sponsoring a booth promoting and selling palms to the public. It was a great weekend and our most successful sale ever. Enthusiasm for palms ran high and the Palm Society booth was among the busiest at the Show. Details of sales and income can be found in the Treasurer's Report. A list of species available for sale can also be found in the issue.

Things were busiest on Saturday but there were ample volunteers to handle the hustle. Besides the public, a number of Chapter members came out in search of the hard to find and made substantial purchases. (Thanks Marshall!). The following folks are to be commended for their aid and assistance on this day: Marita Bobick, Pam Vest, Bill Hahn, Randy Schuster, Gordon Smith, David & Jeri Prall, Ed Hall, and Debbie & Jeff Lowe. What would we have done without you!

Throughout the weekend, Bernie Peterson's palm wood-carvings were on display with a bid box at the cashier. Many people made sealed bids and even more folks commented about their intricate beauty. The larger carving was sold to Bob & Marita Bobick for \$200.00 and the smaller went to Ed & Nancy Hall for \$141.00. Bernie Peterson donated the entire \$341 to the Chapter.

Sunday was a little more laid back but sales were still good. Tony Rudgers took charge of the enthusiasm and kept things moving (and we're all thankful that he did). At the end of the day, Gary Paul of Leu Gardens made a substantial purchase from us to add to the Gardens growing collection. In deference to our fundraiser the Gardens waived their 10% discount on the sale to bolster our efforts and very special thanks to Gary for the gesture. Thanks to Sunday's volunteers: Tony Rudgers, Bernie Peterson, Pam Vest, Hersch Womble (and Saturday too), The Prall's, and Ed Hall.

Once again, the Leu Gardens staff made for a well organized event. Although the scope of the show was smaller this year, the exhibitors that did attend were of good variety and nature, enough so as to make the show at Leu just as enjoyable as last year's larger, less focused event.

In summation, a great time was had by all and we raised \$478 after expenses!

PHOTOS: ABOVE LEFT: Pam Vest handles the sale of a *Chamaedorea radicalis* to another satisfied customer. Behind her can be seen Bernie Peterson's woodcarvings on display. ABOVE RIGHT: (L to R) Stacey Peacock, Marita Bobick, and Hersch Womble. BELOW LEFT: Stacey Peacock, David Prall and his Daughter Brittany. BELOW RIGHT: Jeff Lowe and son Trevor survey the palms.



Photo: Jeri Prall



Photo: Debbie Lowe

TREASURER'S REPORT / FUNDRAISER UPDATE

by ED HALL

BANK BALANCE 2/27/90	\$2711.59
DEPOSITS	+\$2499.86
PLANT SALE RETURNS	-\$2373.80
Less SALES TAX OWED	-\$ 120.24
Outstanding Income	
LEU GARDENS	+\$ 423.00
SO FL COMM COLLEGE	+\$196.00
CASH ON HAND	+ \$79.38
PROJECTED BALANCE	\$3415.79

SUMMARY OF LEU GARDENS PALM SALE

GROSS SALE INCOME	\$3026.60
LESS 80% TO VENDORS	\$2340.80
LESS SALES TAX	\$120.24
LESS BOOTH EXPENSES	\$88.00
NET INCOME CHAPTER	\$477.56

SALES BY VENDORS

HERSCH WOMBLE	\$1431 X.8=	1144.80
BERNIE PETERSON	\$780 X.8=	\$624.00
STACEY PEACOCK	\$456 X.8=	\$364.80
DAVID & JERI PRALL	\$247 X.8=	\$197.60
DEBBIE & JEFF LOWE	\$12 X.8=	\$9.60
DONATED PLANTS		\$22.00

ED HALL

STACEY, PLEASE PUBLISH THIS!!!

FROM THE DESK OF MARITA BOBICK:

Dear Fellow Members of the CFPS-----

We would like to express our thanks and appreciation to a member of our organization....Bernie Peterson. He is definitely an asset to our membership!! We owe a debt of gratitude to this man who willingly gave his time and talent creating wood-carvings of such beauty; and then to donate them to our chapter in order that we might raise funds to match the anonymous benefactor's.... a man that is willing to share his knowledge and expertise in palms--answering question after question and when he admittedly does not know the answer, is willing to try to find the answer....who spends the time to write for this publication interesting and informative articles.....a nurseryman that unguardedly gives out information when others wouldn't.....a gentleman at all times.....a modest man (who is probably blushing at this moment)....Our Bernie Peterson....we are lucky to have him as a member and Bob & I are proud to call him our friend....If you don't know him--then attempt to--- he is worth getting to know and a wealth of palm information.THANK YOU BERNIE!

Sorry Bernie! She made me do it.....Editor.

Marita Bobick

NEXT CHAPTER MEETING SET FOR DAYTONA AREA

SUNDAY MAY 20th 1990

The next chapter meeting will take place on Sunday, May 20th in the Daytona Beach area and a number of interesting activities are planned. The following comes from Martin Wittbold:

"We will meet at Sugar Mill Gardens at 10:00 A.M. for a look at the site we have set aside for the "Dent Smith Palmetum", a general tour of the garden and then parade off to the Serpent Palm which hasn't been visited by our general membership since an early Palm Society meeting back in the 50's. The meeting is also being publicized in the Botanical Gardens of Volusia News-Letter and will probably be announced in the Daytona News-Journal. I am inviting the public in hopes of establishing a local chapter here in what is the birthplace of the Int'l Palm Society. Our Sugarmill Gardens effort is a worthy project that should give the chapter strength and purpose. Hopefully, members of this new chapter would design, plant, and maintain the Dent Smith Palmetum, using hardy palms."

Next we've been invited by Doris Smith to visit the late Dent Smith's palm collection in Daytona Beach for a chance to see what survived the freeze. There'll be a lot to learn there. We will be having our lunch during the visit so you'll need a picnic lunch, a beverage, and a lawn chair. We should also be conducting a short business meeting while on the premises to discuss timely events.

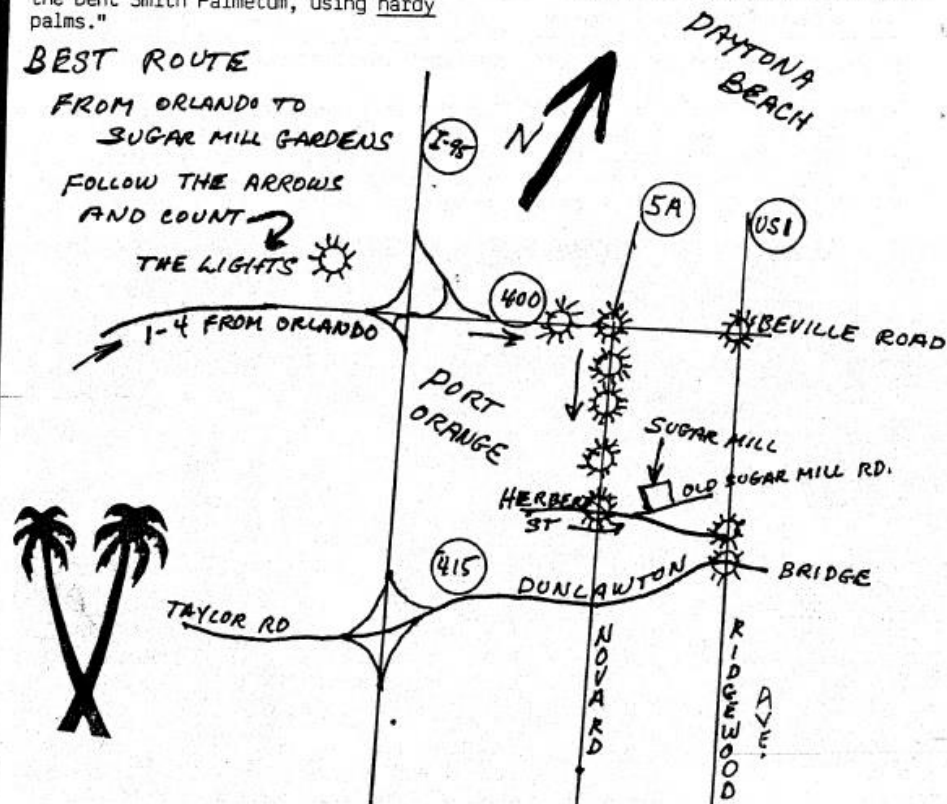
PLANT SALE PLANT SALE PLANT SALE!!!

Our usual plant sale will be conducted at the end of meeting at Doris Smith's. MEMBERS ARE ENCOURAGED TO DONATE PALMS TO AID the chapter. Members who want to sell 80%Seller/20%Chapter are also encouraged to bring palms. These will have to be tagged and marked with a color ribbon. This can be done prior to the sale but must be finished by sale time to ensure proper reimbursement by the chapter to you. We hope this will encourage greater variety & selection.

BEST ROUTE

FROM ORLANDO TO SUGAR MILL GARDENS

FOLLOW THE ARROWS AND COUNT THE LIGHTS



MARCH 10-11, 1990

DAVID & JERI PRALL

Butia capitata
Chamaerops humilis
Coccothrinax argentata
Gaussia maya
Hyophorbe vershaffeltii
Pritchardia sp.
Ptychosperma macarthurii
Roystonea sp.
Schippia sp.
Cycas revoluta
Zamia sp.

HERSCH WOMBLE

Arenga englerii
Chamaedorea radicalis
Chamaerops humilis
Livistona chinensis
Phoenix roebilini
Rhapis excelsa
Sabal minor
Trithrinax acanthacoma
Trachycarpus fortunei
Wash. robusta
Dioone edule
Zamia furfuraceae

BERNIE PETERSON

Sabal causiarum
Livistona decipiens
Chamaedorea radicalis
Cham. microspadix
Sabal minor
Arenga caudata
Washingtonia filifera
Wash. robusta
Acrocomia aculeata
Acrocomia totai
Rhapidophyllum hystrix
Syagrus romanzoffianum
Serenoa repens
Chamaerops humilis
Phoenix rupicola
Trachycarpus fortunei

DONATIONS

Chamaedorea cataractarum
Phoenix reclinata
Livistona chinensis

STACEY PEACOCK

Copernicia alba
Sabal minor
Sabal palmetto
Chamaerops humilis
Livistona rigida
Sabal etonia
Livistona muellerii
Rhapidophyllum hystrix
Wash. robusta
Butia capitata
Sabal parviflora
Paurotis Palm
Cham. microspadix
Blue Serenoa repens
Livistona chinensis
Thrinax radiata
Sabal "Riverside"
Sabal causiarum
Chamaedorea radicalis
Sabal mexicana

DEBBIE & JEFF LOWE

Neodypsis decaryii

FIT FILE PHOTOCHOOSING "OUR" PALM:

At the winter business meeting Rob Pressrich brought us up to date on his efforts to get some Palm Society "T" shirts made up. The topic of design led us to conclude that a palm representative of our chapter be chosen which could be used on the "T" as well as incorporated into a logo for letterhead, etc.

A number of us felt that the *Syagrus X Butia* Hybrid was the best choice because of its unique history here in Central Florida (and its numbers!).

Another idea suggested placing all 3 of the palms into a design that would have an aesthetic as well as informative impact.

THE BIG QUESTION!!!! Is there anyone out there that can draw and design such a thing? We need an artist. (It may be too late for the "T" shirts as I've been in contact with Rob as of late) Does anyone object to these two ideas? Let us hear from you.

PALMHEAD FREEZE:

Due to space limitations, a more detailed account of the effects of the Xmas Freeze 89 at Palmhead (Zolfo Springs) will be postponed until next issue. I still encourage anyone with freeze accounts to continue to send them in. Reports from Orlando & Tampa (our two biggest pockets of membership) are conspicuously missing from the reports in this issue. We still want to hear from you! Thanks to all the members who shared their experiences with us in this issue and please feel free to update the info if necessary.

ACROCOMIA SP. AT FIT:

This photo of a rather large and graceful *Acrocomia* sp. at FIT in Melbourne was taken at last year's 2-day meeting. It was mentioned as an *A. totai* on our tour but Bernie Peterson who has studied the subtle differences among members of this genus, feels that it is probably another species besides *Totai*. Photo: S. Peacock

IMPORTANT NOTE!

DENT SMITH'S COLLECTION 2ND STOP AT MAY 20th MEETING: Directions on how to get to the Smith residence to be available at Sugar Mill Gardens. (See Map in Meeting Announcement) If you can't get there but want to attend the tour of the Dent Smith collection, the address is:

2514 So Peninsula Dr.
 Daytona Beach (Beachside)

ARRIVAL TIME: 12:00 to 1:00 PM

SEEDS FROM BORNEO

TO: CENTRAL FLORIDA MEMBERSHIP

FROM: WILLIAM A. HICKEY

Dear Members,

I don't know if anyone else answered the Jan '90 Principles classified for "Palm Seed from Borneo"; but I did. I received a reply dated Mar 26 from Dr. Timothy Hatch representing Borneo Landscaping & Seeding. He said they had been collecting seed for approx 2 years and enclosed a list of 126 varieties available (mostly *Licuala*, *Rattan*, *Pinanga*, *Areca*, & *Arenga*)many were not completely identified.

They also offered photographs of the parent plants for \$40 a set to facilitate identification and ordering. It seems pointless for more than one of the members to invest \$40 in the photographic brochure so if anyone has already done so, please call because I can FAX the good doctor and have him credit the \$40 to my first purchase. Anyone wishing to cancel their photos and share mine, please contact me.

I have applied for the appropriate import permits from the USDA. The effort thus far has been quite entertaining. I expect a reply before long. I'll send guidelines for anyone else interested in also obtaining permits if I ever succeed myself.

Anyone interested in viewing either the seedlist or photographs, feel free to contact me anytime. (William.... if you attend the next meeting, perhaps you might bring them....Ed.)

William A. Hickey
 PO Box 321593
 Cocoa Beach, Fl 32932
 Ph 407-277-2940 (Orlando)



JUBAEOPSIS CAFFRA PHOTOS: Thanks to Ed Brown of Jacksonville for these great shots of Jubaeopsis in their native habitat in South Africa. It appears that these palms will be spotlighted in an upcoming issue of Principes in an article written by Ed several years ago.

FALL MEETING

ATTENTION WEST COAST MEMBERS!!!!!!!!!!!!

The Central Florida Chapter held its first 2-day meeting in 1989. The East Coast event was a great success. This year (sometime in the fall) we are planning to do the same on Florida's western shores. Members are needed to host tours of their collections and other sites of interest. Richard Bailey of Riverview has suggested a visit to the mansion at Chinsegut Hill near Brooksville to see the naturalized *Livistona chinensis* and other palms.

SO THE CHALLENGE HAS BEEN ISSUED! This is your chance West Central Florida... the rest of us want to see how the other half lives. If you have ideas, a palm collection, or a nursery or institution to tour, then there are 2 names that come to mind in your area that should be willing to help organize a date and itinerary for the event.....our former President Rob Pressrich of St. Pete and our newest Vice-Pres Jerry Shrewsbury also of St. Pete. Contact them by calling:

ROB---813-344-3336
JERRY---813-398-5755

Remember, it is likely to be a well attended weekend with folks coming in from afar.

Rob & Jerry:

Hope I haven't slipped you guys too surprising a curve ball by nominating you for the task. Honestly, I don't hear too much from "west-coasters" and would like to encourage more participation by them in the Newsletter. This fall weekend will hopefully bolster enthusiasm in that area. Further down the road when an itinerary is more developed, we'll need some hotel and rate info to allow members to make their plans. I look forward to helping you guys in anyway I can. Meeting in ~~Sept~~? Oct? Nov?

FREEZE FOCUS

ZEPHRYHILLS FREEZE REPORT

by Erwin & Eugenie Fellows

We live about 3 miles NW of the intersection of I-75 and SR 54 in Pasco County. Our land is in a cold pocket. Here are some data on temperatures and how our palms did:

Dec 23, 1989: low 32° AM; high 33° afternoon; 0.05" rain
Dec 24: low 17° AM; high 34° afternoon
Dec 25: low 17° AM high 61° afternoon
Dec 26: low 30° AM high 54° afternoon

no freeze since.

Arenga Engleri, small, in covered/area but open to south; no damage

Bactris gasippes, very small seedling in pot, in covered area with walls; think it completely froze, top came off

Butia capitata-large--leaves on lower west side froze; stood 10° on 1/13/81

Caryota mitis in covered area -- no damage

Chaemadorea microspadix - in covered area no damage

Chrysalidocarpus lutescens in covered area with walls -- parts of new leaves froze but seems OK otherwise

Livistona chinensis - in sheltered woods area - outer portions of all leaves froze but new leaves are coming at this time. Large ones stood 10° on 1/13/81

CALL FOR PHOTOS!!!!!!

PHOTOS NEEDED: Members are once again urged to send in their photos...any photos! Announcing...the tallest *Butia capitata* competition. Seen an extra tall *Butia* (Pindo) in your neck of the woods (and there surely must be) THEN SEND IT IN!!!!!!!!!! Also wanted are pictures of single species groups or groves of palms. I just received a photo of a multiheaded Hybrid from Pam Vest (too late for this issue) Look for this beauty next issue! Please indicate for return of photo.

Paurotis Wrightii--large clump in very exposed area; all leaves froze but think trunks and buds OK; recovered from severe freezing, as a much smaller plant, on 1/13/81

Trachycarpus fortunei; no apparent damage; same with 10° on 1/13/81

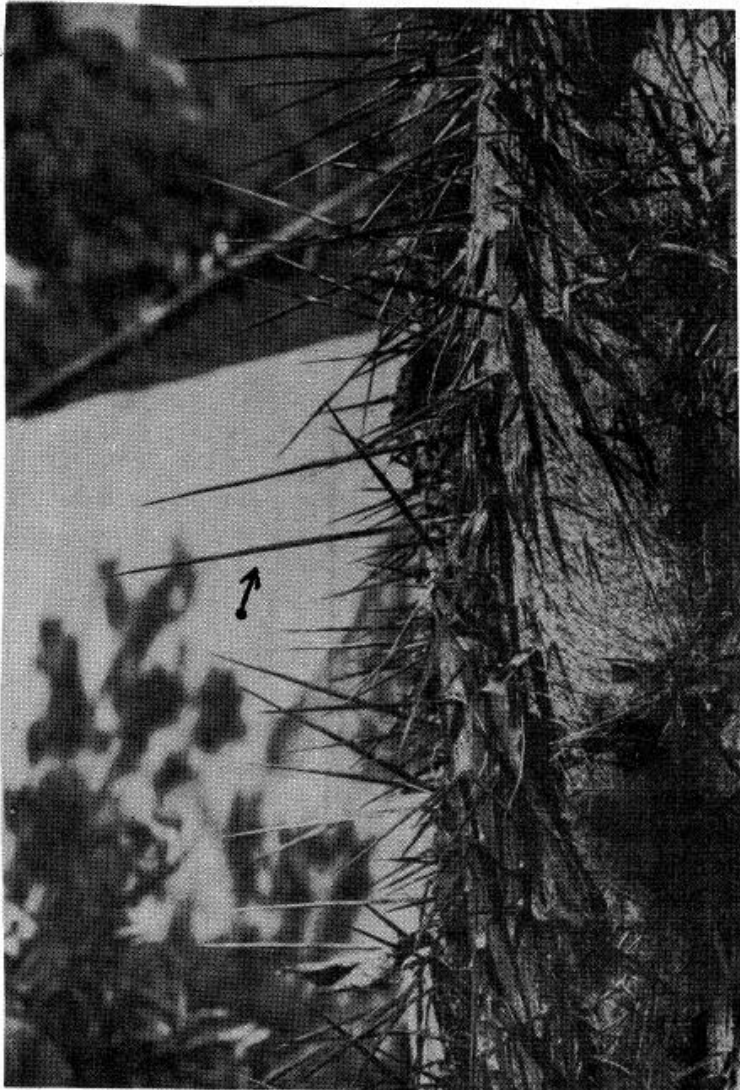
Washingtonia filifera in very exposed location; leaves froze but not bud, is making new growth; it also survived (as a very small plant) after 10° on 1/13/81

Chamaerops humilis; no apparent effects ; a small plant in exposed area

Phoenix acaulis cv *Sylvestre*; all leaves froze but this is a long established plant that survived the 10° on 1/13/81

Small seedling Pindos (1 gal. size) planted out in exposed area

NOT FOR THE FAINT-HEARTED



SPINY ACROCOMIA TOTAL AT PALMHEAD:

This closeup of the trunk of a young *Acrocomia total* reveals the reason why not everyone would want this species in their collection. Even the leaves carry the spines in smaller and smaller sizes to their very tips. The arrow points to a spine that measured out at six and 1/2 inches. The palm was planted about 3 1/2 years ago and has been a fast grower. It seems to have survived the freeze in relatively good condition, albeit "frazzled".

PHOTO: S Peacock

ADVERTISING POLICY:

To be sure the info in the adds is current, we will now ask that all advertisers submit their adds in observance of the issue posted deadline each time they want their add posted in the bulletin. Ads should be typewritten and single spaced as much as possible to conserve space. Ads are free to IPS members and is space available. In a space crunch, Central Fl members will be given priority....but so far the problem has been one of no advertisers rather than too many. DEADLINE FOR THE NEXT ISSUE IS JUNE 5, 1990.

VOTING FOR DIRECTORS OF THE IPS INCLUDES

LOCAL BOY: I hope that everyone noticed that our own Treasurer, Ed Hall, was among the candidates for office on the ballot of the recent IPS elections. He was among those being chosen for "Directors" next time. The deadline for voting had been Mar 15, but I believe that was extended. So send that ballot in if you haven't already, soon! Best of luck to you Ed!

CLOSING COMMENTS AS WE GO TO PRESS 4/25/90:

We can thank everyone whose contributions to this issue helped make it all come together. I encourage everyone to participate in the newsletter....since without you there wouldn't be much life in this baby. It is your forum, so use it!!!

The big news is that we still have a chance to raise the \$5,000 for the endowment to be matched by another \$5,000 from an anonymous donor. In fact, we are about half way there (\$2500) with the \$1500 we have raised since announcing the effort and with another \$1,000 available from our established bank account. And we still haven't heard from a number of important people! So if you haven't, get on the bandwagon...it really could be an attainable goal with your help. Thanks to all the folks listed in the last issue as well as to those in the list to the right for their very generous support.

One last person to thank who has been overlooked is Dr. Fred Essig of the Uni of So Fla for traveling all the way from Tampa to speak at our Winter Business meeting in Orlando in Feb. I really enjoyed his topic "The Palm Flora of the Isle

DONATIONS

Bernie Peterson, Cocoa
Woodcarvings sale: \$341.00

Anonymous \$100.00

Stanley & Mary Kiem
Miami, Fl \$ 10.00

Paul R. Craft
Loxahatchee \$ 25.00

James Parkhurst
Indian Harbor Beach \$100.00

Michael Dahme
Grant \$100.00

Tony & Karen Rudgers
Orlando \$ 25.00

Uncle Charley's Nsy
Oviedo (Charles Grant) \$ 30.00

Leu Gardens Palm Sale

Rockledge Gardens \$156.00

Hersch Womble \$287.00

Stacey Peacock \$ 92.00

Dave & Jeri Prall \$ 50.00

Debbie Lowe \$ 3.00

Marita Bobick \$ 8.00

Bill Hahn \$ 8.00

J. Burns Creighton, Jr
Tampa \$250.00

(This last donation has not been added to Treasurer's Report)

Thanks to the generosity of these members and those listed in the last issue, our fundraiser proved a worthy effort; so worthy in fact, that our benefactor has added a considerable extension to the deadline. When the date for our fall meeting has been set, the deadline will be the second day of that meeting. SO, THE \$5,000 FUND DRIVE IS STILL ON. WE ARE AT THE \$2500.00 mark (half way there!). We can do it if those who have not aided the effort come forward. You can see that you'll be in good company!!!

UMATILLA FREEZE REPORT by Larry Bains

Here is a brief summary of what I have observed at my property located in Umatilla (Lake County) which is about 30 miles NW of Orlando.

The low temperature down by the lake was 22°F, and further up the hill it got as low as 18°F. In the afternoon of Dec 23rd it was 27°F at 2:00 P.M. It had been sleeting throughout the day and later it turned to snow which actually accumulated on rooftops. The following is what I have observed as of March 10:

RAVENEAE RIVULARIS: Banked for protection; exposed foliage burnt... plant now recovering

PHOENIX DACTYLIFERA: In an open unprotected area on the hilltop. Of the 18 plants planted one year ago from 3-gal containers, 11 were survivors. All survivors were burnt and are now recovering; even the specimens that had their hearts pulled out.

MULE PALMS (BUTEAXSYAGRUS): Palms had been banked and in the ground for a year from 3-gal pots. In the open and unprotected location all foliage outside the banking was killed --the bud is undamaged under the soil.

PHOENIX RECLINATA: Also banked and in an exposed location. The foliage was killed back to the soil line but the new growth is so quick as to have almost returned the plant to its former size.

CYCADS: All by the lake...Zamia furfuracea-killed (Cardboard palm)... Queen Sago (Cycas circinalis)-killed.....King Sago (Cycas Revoluta) only minor damage.

SYAGRUS ROMANZOFFIANUM: By the lake; 3-gal palms in the ground for 1 yr Both Died.

LIVISTONA CHINENSIS: 3-gal palm planted only weeks before the freeze next to the lake. Only minor burn to the outer foliage. Some large ones in the area received very little damage.

NEEDLE PALM: Surprised to see some bud damage on the emergent growth, but all in all relatively minor damage.

HOWEA FOSTERIANA: by the lake, banked and survived (under bank)

PHOENIX CANARIENSIS: These seedlings by the lake were planted just weeks before and unprotected. Only minor burn and recovered.

LIVISTONA SP.: By lake, burnt but recovering (unprotected)

WASHINGTONIA FILIFERA: Unprotected on the hill...older foliage was burnt, center foliage green. Planted 1 yr ago from 3-gal pot.

WASHINGTONIA ROBUSTA: on a peninsula between two lakes...large specimen was undamaged...two smaller seedlings both had buds pulled out, but have produced new growth

TRIANGLE PALM: Neodypsis decaryii, banked, exposed plant killed, but covered bud is alright

SERENOA REPENS: Surprising to see a touch of cold damage to an emerging frond (of little consequence) to this very old palm with 12 ft trunk

ARENGA ENGLERII: Amazing that this palm which is supposedly hardy to 15°F appears to be dead. Was the duration too long?

ACROCOMIA TOTALI: These are midway up the hill. They were banked and are rapidly recovering. Exposed foliage killed.

PHOENIX RUPICOLA: Down at the lake (22°F) where they were banked. All exposed foliage killed but is now recovering.

EVERGLADES PALM, ACOELLORHAPE WRIGHTII: Unprotected by the lake...all foliage was killed but new buds are appearing from all six trunks

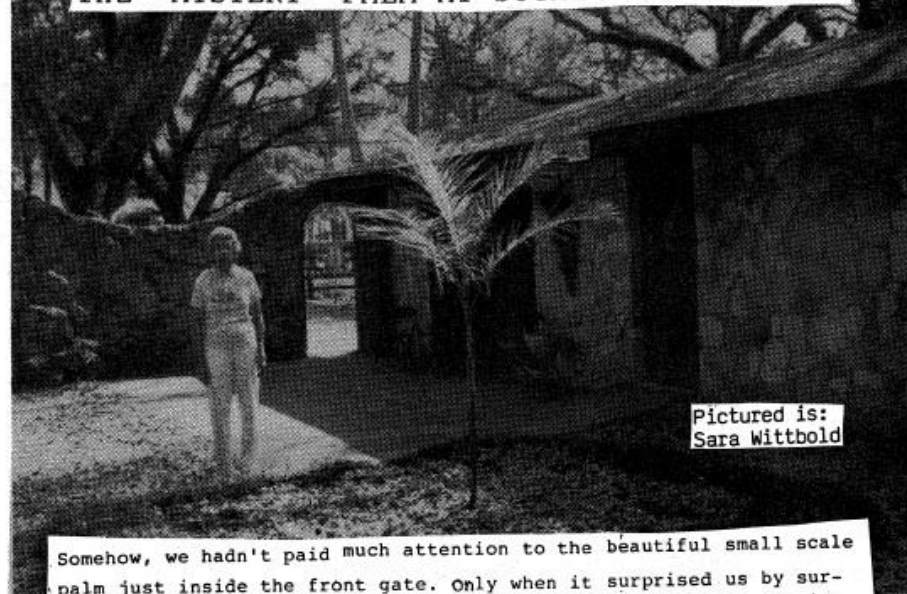
UNDAMAGED PALMS: Chamaerops humilis (minor burn to the bud), Chamaedorea microspadix, Chamaedorea radicalis, Butea capitata, Sabal minor, Sabal etonia, Trachycarpus fortunei.

NEW NEWSLETTER AVAILABLE FROM SO. FLA.

GOOD NEWS! The South Fl Chapter has published the first issue of their Newsletter called "The Palm Report". Congratulations are in order for Bob Petersen of Naples for the wonderful job he is doing as Editor. Bob informs me that anyone wishing to receive "The Palm Report" can do so for free in 1990 (there will probably be a subscription fee next year). To subscribe, write to Bob Petersen---2165 51 Terr S.W.----Naples, FL 33999.

Great Job Bob!

THE "MYSTERY" PALM AT SUGAR MILL GARDENS.



Pictured is:
Sara Wittbold

Somehow, we hadn't paid much attention to the beautiful small scale palm just inside the front gate. Only when it surprised us by surviving the ice and snow of Christmas, 1990 did we really appreciate it enough to do the detective work necessary to learn its name. How did it get there? Where did it come from? ? How old is it?

A few phone calls brought the answers to these questions, and more. We learned that it was one of a group of palms purchased from Wally Mowbray by the County of Volusia and planted in the gardens by Urban Horticulturist, Linda Landrum and county workers. It is the result of a cross made by Wally in 1982 by removing all the male blossoms from Chamaedorea radicalis so that the nearby Chamaedorea microspadix became the male parent. Botanically it is Chamaedorea radicalis x microspadix. Wally coined the name Ch."radix", which seems quite fitting. The resulting palm is an improvement over both parents, having a better trunk and foliage than either, and none of the leafspot so often found on microspadix. The male blossoms on radicalis are easy to identify, as they are the first to open.

We hear so much about the extinction of species. Perhaps the production of new improved cultivars may be a partial reversal of that trend, Chamaedorea "radix" is a valuable addition. Okay, you "palm nuts", how about trying for Chamaedorea x "microcalis" ?

by Martin J. Wittbold

CAN WE GET TOGETHER AT YOUR PLACE????

IDEAS NEEDED FOR SUMMER MEETING IN LATE JULY OR AUGUST

We need you! Any suggestions for a meeting this summer will now be entertained. Please contact Tony Rudgers (407) 896-4038, Jerry Keuper at 407-723-3483 (area code?), Jerry Shrewsbury 813-398-5755, or Ed Hall at 407-647-2039. LAKELAND? COCOA? GAINVILLE? WHERE WILL IT BE?????????